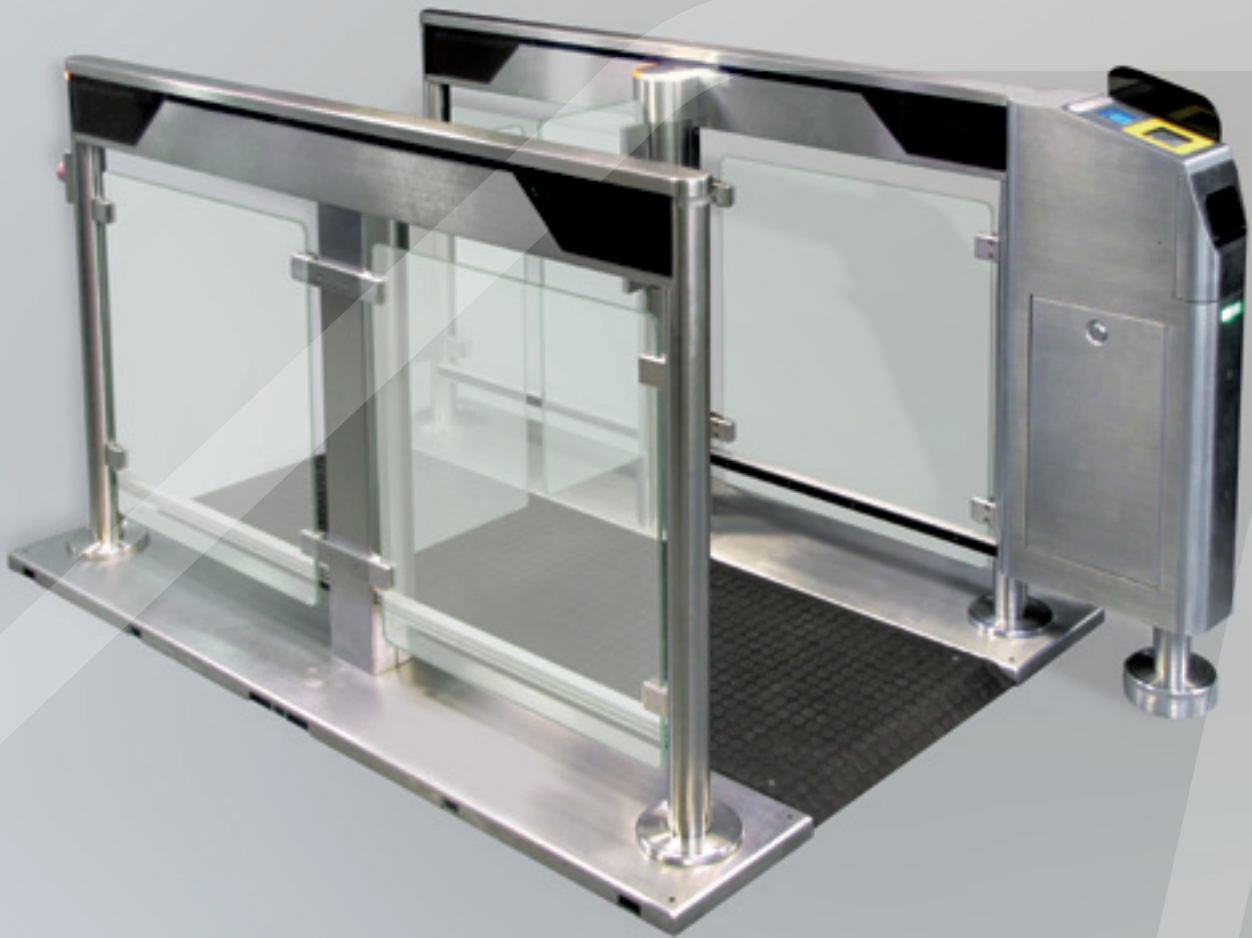


Access controlled... Future secured.



# SlimLane AP

SECURITY INSPECTION & SELF BOARDING

**AS** **AUTOMATIC**  
**SYSTEMS**  
LEBR GROUP

AIRPORT



## SLIMLANE AP

### AIRPORT PASSENGER

Featuring a streamlined design, SlimLane AP swing door security entrance lanes combine high throughput with advanced passenger detection while providing a minimal footprint.



## AESTHETICS

- Transparent and elegant design
- Minimal footprint for maximum throughput
- Ergonomic user interface including barcode & NFC reader, colored display and receipt printer
- Precision controlled tempered glass obstacles
- Top quality assembly and finish

## SAFETY

- Dynamic, electronic user protection
- Prevents finger entrapment and other impacts
- In the event of a power outage, the obstacles will breakaway
- 'EGRESS' operating mode meets the highest fire safety standards

## SECURITY

- High-performance detection system regardless of obstacle height
- Glass obstacles up to 1700 mm
- Electromechanical locking to withstand forced entry attempts

## THROUGHPUT

- Fast opening/closing of swing doors (<1 sec.)
- Precise pictograms for intuitive use

## RELIABILITY

- High throughput at the boarding gate: up to 30 passengers/minute
- Highly reliable products with MCBF of several million cycles
- Low cost of ownership
- World leader in speed gate market (IMS source)

45 YEARS  
of experience  
100.000  
security entrance lanes  
90 MILLION  
daily users



## MONITORING & MAINTENANCE

- Throughput management application runs on an open source operating system (Linux) and an embedded Web server
- Intuitive maintenance interface offering real-time monitoring and the ability to configure and maintain every lane locally or remotely via a simple Web browser
- Complete connector technology with standard IP and USB connectors
- Auto failure monitoring and automatic lane reconfiguration mechanism for increased service time

## MODULARITY

A complete offering including compact, standard and wide lanes with various glass obstacle heights and a wide selection of options and accessories

### SlimLane 940/950 AP

DOUBLE SWING DOOR

Standard Lane width:  
600 mm (23<sup>5</sup>/<sub>8</sub>"")  
Or ADA Wide lane width:  
900 mm (35<sup>3</sup>/<sub>7</sub>"")



Overall dimensions

Standard Passageway: 1955 x 1005 mm (77" x 39<sup>2</sup>/<sub>3</sub>"")  
Wide Passageway: 1955 x 1305 mm (77" x 51<sup>2</sup>/<sub>5</sub>"")  
Obstacle heights: 900, 1200, 1500, 1700 mm

### SlimLane 944 AP

SINGLE SWING DOOR

Standard Lane width:  
584 mm (23"")



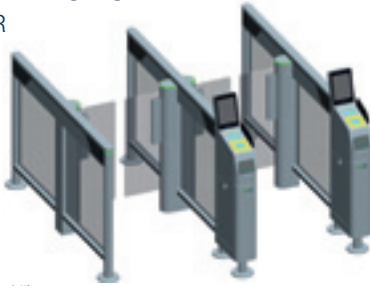
Overall dimensions

Compact Passageway: 1955 x 896 mm (77" x 35<sup>1</sup>/<sub>3</sub>"")  
Obstacle heights: 900, 1200, 1500, 1700 mm

### SlimLane 940 AP in Lane

DOUBLE SWING DOOR

Standard lane width:  
600 mm (23<sup>5</sup>/<sub>8</sub>"")



Overall dimensions

Dual Passageway:  
1955 x 1995 mm (77" x 78<sup>1</sup>/<sub>2</sub>"")  
Obstacle heights: 900, 1200, 1500, 1700 mm

### SlimLane 945 Twin AP

SINGLE SWING DOOR

Standard lane width:  
583 mm (23<sup>5</sup>/<sub>8</sub>"")



Overall dimensions

Dual Compact Passageway:  
1955 x 1645.5 mm (77" x 64<sup>4</sup>/<sub>5</sub>"")  
Obstacle heights: 900, 1200, 1500, 1700 mm

## DETECTION & SECURITY

SlimLane AP detection system is particularly suitable for passenger motion detection at airports & airlines industry. An innovative combination of elevated computing power and a high density matrix of IR beams guarantees dynamic and predictive passenger tracking.

SlimLane AP detection is based on 2 lines of infrared cells positioned horizontally:

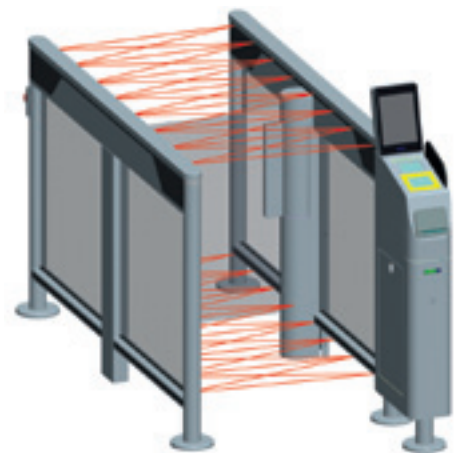
- Waist-height positioning (1st line)
- Ankle-height positioning (2nd line)
- Each line is made of four (4) DIRAS sensor bands totalling 32 direct IR photo beams

The high capacity logic processor (ARM9) allows for crossing of the IR beams, thus doubling the detection density.

- A total of 64 IR beams electronically controls each passage and prevents unauthorized users in secured zone

SlimLane AP detects the most challenging fraud attempts:

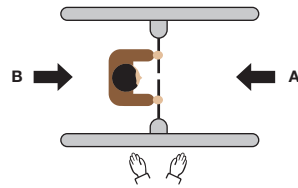
- Advanced tailgating attempt detection
- Opposite direction fraud detection
- Turnaround detection with the possibility of setting the tolerance levels
- Anti-pass back function
- Reliable people counting system



# TWO OPERATING MODES

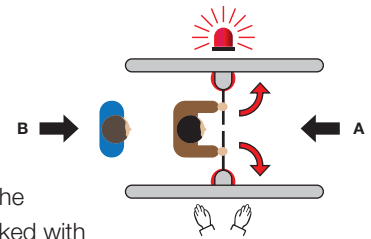
## 'SECURI-SAFE' mode focused on security (standard)

- Electromechanical locking of obstacles in case of a forced entry attempt in direction A or B



## 'EGRESS' mode compliant with the highest fire safety standards (option)

- In case of emergency, the obstacles can be unlocked with a simple push to automatically open in the direction of egress (direction B)
- Audio and visual alarms to signal evacuation in progress
- Returns to prior operating mode (programmable timer)



# TECHNICAL SPECIFICATIONS

<b>Application Interface</b>	AEA2012 Boarding or embedded PC application
<b>Communication</b>	Serial, Ethernet, USB
<b>Multifunction reader</b>	IER 602 2D/1D Bar Code scanner, RFID and NFC
<b>Obstacle</b>	Swing door single or double, 10 mm thick monolithic glass
<b>Minimum opening or closing times</b>	<1s. version dual swing door 1s. version single swing door
<b>Frame</b>	Self-supporting kinematic steel
<b>Housing</b>	Stainless steel
<b>Passageway for double swing door</b>	600 mm standard or 900 mm ADA extra wide
<b>Passageway for single swing door</b>	584 mm standard
<b>Power Supply</b>	110 - 240 VAC 50/60hz
<b>Consumption per lane</b>	Maximum 300 W
<b>Motor</b>	24V 118W
<b>Ambient temperature</b>	0 to + 40°C
<b>Ambient relative humidity in operation</b>	< 95%, no condensation
<b>Sound level</b>	55 DB
<b>Weight</b>	SlimLane 940/950 AP Double swing doors ○ Single lane 160 kg ○ Dual lane 284 kg  SlimLane 944/945 AP Single swing door ○ Single lane 140 kg ○ Dual lane 237 kg
<b>IP</b>	40
<b>Standards</b>	CE (UL pending)
<b>Optional Receipt printer</b>	Direct Thermal printer 203 dpi, 80 mm Paper width, 72 mm Print width, 350 mm/sec Printing speed, 83 mm max Internal paper roll diameter, Output sensor
<b>Optional PC</b>	Intel Pentium G645T2, 4GHz processor, 4GB Memory, 320 GB HD
<b>Optional additional 8" screen</b>	8,4 inch color TFT – LCD

## BENEFITS

- Automation of passenger access control
- Restricts access to secured zone
- Passenger tracking
- Reduced need for manned entrance
- Meets fire safety standard
- Reduced need for accurate control of passenger flow