

Access controlled... Future secured.



# Smart n' Slim

MONITORING PANEL

**AS** **AUTOMATIC**  
**SYSTEMS**  
VER GROUP

PEDESTRIAN



**A control center for management and supervision, Smart n' Slim operates up to 144 SmartLane or SlimLane security entrance lanes, regardless of their location.**

## VISUALIZATION

- Manage all your lanes simultaneously from anywhere
- Monitor alarms
- Verify the operating status of your lanes and reveal any technical errors in real-time
- User-friendly and intuitive interface



## CONTROL

- Change operating modes instantly or on a programmable schedule (morning, evening, peak hours)
- Manage visitor access (open obstacles for one or more visitors to any lane)
- Remote emergency opening
- Ability to control a group of lanes or a specific lane
- Rapid response time for troubleshooting/maintenance
- Increased service time

## CONSULT

- Alarms, events and errors recorded in a log for enhanced traceability
- Counters and usage statistics to determine traffic trends (rate in/out, alarms)
- Passage flow optimization per usage period

## FLEXIBILITY

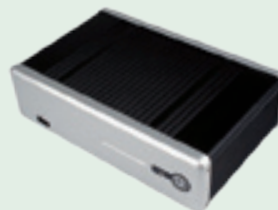
- Customizable operating modes
- Various user profiles (operator and supervisor)
- Compatible with SlimLane and SmartLane security entrance lanes and with SL93x swing gates
- "Touchscreen" or "server" version available

## How Smart n' Slim works

Smart n' Slim is available in two versions: **Server** and **Touch screen**

### The Server version

The Server version includes a centralized server and supervision software accessible via a Web browser from any computer connected to the same network as the lanes.



### The Touch screen version

In the Touch screen version (desktop), the centralized server and supervision software are combined in the interface, giving users direct access to the lanes via login credentials.

