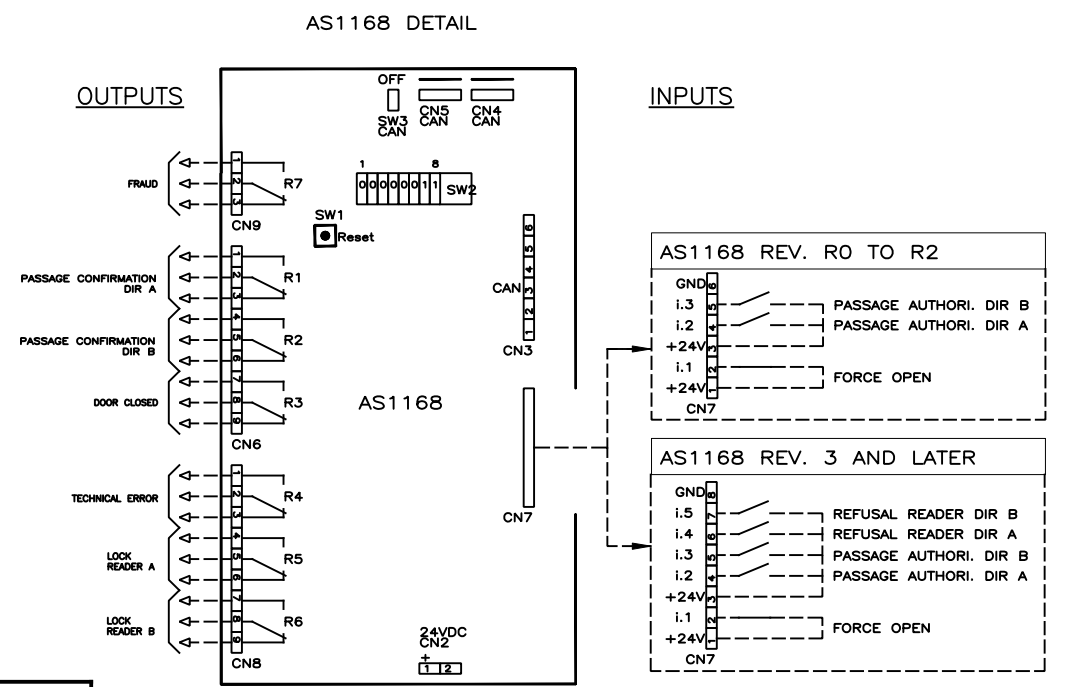
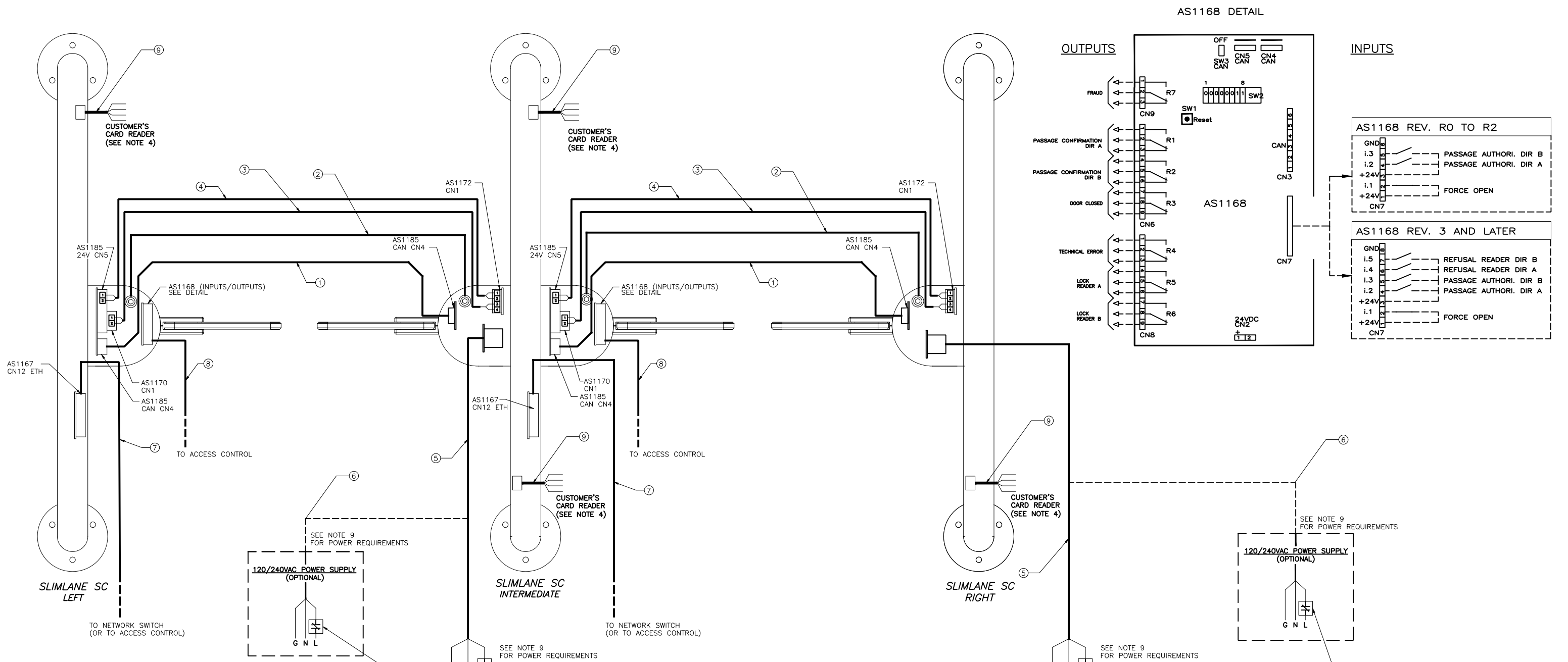


ELECTRICAL CONNECTIONS



#	DESCRIPTION	SUPPLIER
1	"W25" LOW VOLTAGE CABLE, 4 COND.(2 PAIRS), 24 AWG, SHIELDED, 1/4"DIA. X 9.8FT (NOTE 1)	ASA
2	"W10" GROUND CABLE, 1 COND., 14 AWG, 9/64"DIA. X 6.5FT (NOTE 1)	ASA
3	"W14" LOW VOLTAGE CABLE, 2 COND., 18 AWG SHIELDED, 1/4" DIA. X 9.8FT (NOTE 1)	ASA
4	"W13" LOW VOLTAGE CABLE, 2 COND., 18 AWG SHIELDED, 1/4" DIA. X 9.8FT (NOTE 1)	ASA
5	POWER CABLE, 3 COND. 12GA, MAX LENGTH : 100" (NOTE 1 & NOTE 2)	CUSTOMER
6	POWER CABLE, 3 COND. 12GA, (IF 120V OPTION SELECTED) (NOTE 2)	CUSTOMER
7	ETHERNET CABLE, CAT 6	CUST/OPT
8	I/O CABLE (NOTE 6)	CUSTOMER
9	READER CABLE (DEPENDS ON SELECTED READER)	CUSTOMER

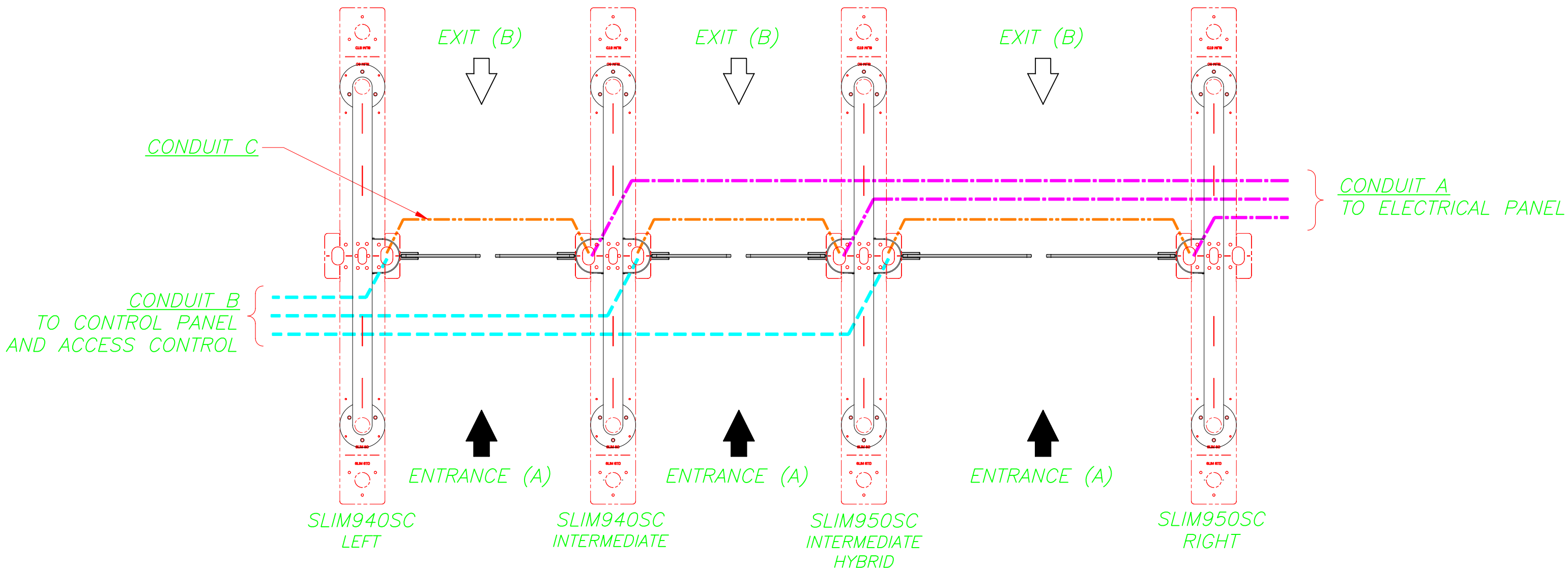
NOTE 1: IF THE INSTALLATION REQUIRES LONGER CABLES, PLEASE CONTACT AUTOMATIC SYSTEMS.
 NOTE 2: AS A REFERENCE ONLY. RESPECT ALL LOCAL STANDARDS AND LAWS.
 NOTE 4: CARD READER INSTALLED ON RIGHT SIDE OF UNITS IN RELATION TO PASSAGE DIRECTION.
 NOTE 5: ALL INPUTS ARE NORMALLY OPENED, EXCEPT FOR THE FORCE OPEN CONTACT.
 NOTE 6: THE NUMBER OF CONDUCTORS AND WIRE GAUGE IS DETERMINED BY THE CUSTOMER AND DEPENDS ON THE INPUTS AND OUTPUTS REQUIRED, REFER TO "AS1168 DETAIL" VIEW.
 NOTE 7: FOR DETAILED ELECTRICAL DIAGRAM REFER TO NAM-SLIM-EL-BI-01.
 NOTE 8: FOR NON FIRE EMERGENCIES, THE FORCE OPEN CONTACT ON AS1168 BOARD MAY BE USED TO HOLD OPEN THE LANE (INSTEAD OF CUTTING POWER), IT IS THE RESPONSIBILITY OF THE INTEGRATOR/CUSTOMER TO VERIFY IF A SOFTWARE OPENING RESPECTS LOCAL STANDARDS AND LAWS.
 NOTE 9: POWER REQUIREMENT: FOR 24VDC POWER SUPPLY: 15 A
 FOR 120VAC POWER SUPPLY: 6 A

AUTOMATIC SYSTEMS MAKES NO REPRESENTATION AS TO THE PROPER POSITIONING OF THE SECURITY ENTRANCE LANES AT THE INSTALLATION LOCATION. ESTABLISHING THE LAYOUT AND PLACEMENT OF THE UNIT(S) AND DETERMINING COMPLIANCE WITH THE APPLICABLE BUILDING CODES, OTHER CODES, LAWS AND REGULATIONS IS THE SOLE RESPONSIBILITY OF THE PURCHASER. INSTALLATION MUST BE PERFORMED BY A QUALIFIED INSTALLER FOLLOWING MANUFACTURER'S INSTRUCTIONS, OTHERWISE AUTOMATIC SYSTEMS' WARRANTIES MAY BE VOID.

MATERIAU/MATERIAL		FICHER FILENAME	DIMENSIONS		FORMAT	REV.	DATE	MODIFICATIONS/CHANGES	PAR/BY
-		NAM-SLIM-EL-50-EN.DWG	-		B				
FABRICATION		TRAITEMENT/TREATMENT	EBARBER LES ARÊTES VIVES BREAK ALL SHARP EDGES						
Nb./App.	POIDS/WEIGHT	SURFACE	FINI/FINISH	IMPERIAL X/X ±1/32" X.X ±0.030" X.XX ±0.015" X.XXX ±0.005"	METRIC X ±1mm X.X ±0.5mm X.XX ±0.05mm	TITRE SLIMLANE 940SC - 950SC TITLE GENERIC ELECTRICAL CONNECTIONS AND CONDUITS LAYOUT			
LES INFORMATIONS CONTENUES SUR LES DESSINS DE ASA Inc. SONT CONFIDENTIELLES ET SONT LA PROPRIÉTÉ DE ASA Inc. TOUTES REPRODUCTIONS, DISTRIBUTIONS OU UTILISATIONS SONT INTERDITES SANS LA PERMISSION ÉCRITE DE ASA Inc.		INFORMATION DISCLOSED HERE IS CONFIDENTIAL AND IS THE PROPERTY OF ASA Inc., ANY REPRODUCTION, DISTRIBUTION OR USE IS PROHIBITED WITHOUT A WRITTEN CONSENT BY ASA Inc.		ANGLES ± 1/2° SAUF SI INDIQUÉS UNLESS OTHERWISE NOTED	DESSINÉ PAR ALE VÉRIFIÉ PAR SOS				
				ECHELLE/SCALE N/A		DATE 2016/06/07		FEUILLE/SHEET 1 DE/OF 3	
				No. DESSIN/DWG. No. NAM-SLIM-EL-50-EN				REV. A	



CONDUITS LAYOUT



NOTES:

- 1- THE NUMBER OF UNITS AND LANES MAY VARY DEPENDING ON CUSTOMER REQUIREMENTS, REFER TO CUSTOMER SPECIFIC LAYOUT TO ADJUST THE NUMBER OF CONDUITS ACCORDINGLY.
- 2- ALL WIRING MUST MEET OR EXCEED STANDARDS AND CODES AND MUST BE INSTALLED BY A CERTIFIED TECHNICIAN.
- 3- 10' OF CABLE RUN MUST BE LEFT UNBURIED.
- 4- INSTALLATION OF A PULLING LINE BETWEEN EACH GATE IS RECOMMENDED.
- 5- UNITS MUST BE SECURED TO STRUCTURAL FLOOR WITH PROVIDED HARDWARE PRIOR TO USE
- 6- CONDUITS SHALL BE BURIED AT LEAST 5" BELOW THE FINISHED FLOOR SURFACE TO AVOID CONTACT WITH ANCHORS (2-3/4" LONG).

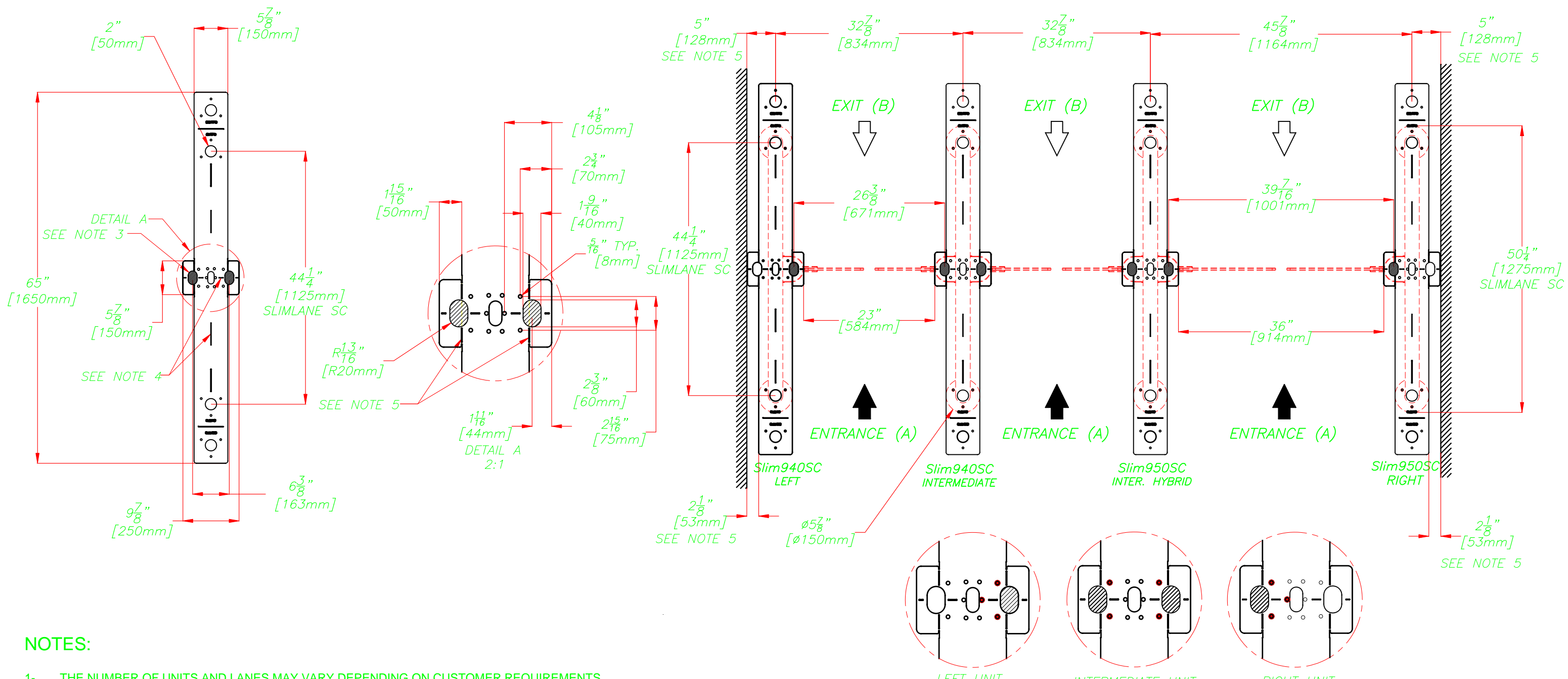
- 7- CONDUIT DETAILS:**
- CONDUIT A- USE : POWER CABLE (TO ELECTRICAL PANEL)
 SIZE : PVC 3/4"
 NOTE: SEPARATE POWER FEEDS ARE NECESSARY FOR EACH RIGHT AND INTERMEDIATE UNITS (CABLE SUPPLIED BY CUSTOMER).
 - CONDUIT B- USE : CONTROL PANEL AND ACCESS CONTROL (READERS, BIOMETRIC ETC...) CABLES.
 SIZE : PVC 3/4" OR 1" MAX.
 NOTE: CONDUIT TO EACH LEFT AND INTERMEDIATE UNITS. LOW VOLTAGE CABLES ONLY (CABLES SUPPLIED BY CUSTOMER, IF APPLICABLE)
 - CONDUIT C- USE : LOW VOLTAGE INTERCONNECTION CABLES.
 SIZE : PVC 3/4"
 NOTE: 1 CONDUIT PER LANE (CABLES SUPPLIED BY ASA).

CONDUIT A -----
 CONDUIT B -----
 CONDUIT C -----

AUTOMATIC SYSTEMS MAKES NO REPRESENTATION AS TO THE PROPER POSITIONING OF THE SECURITY ENTRANCE LANES AT THE INSTALLATION LOCATION. ESTABLISHING THE LAYOUT AND PLACEMENT OF THE UNIT(S) AND DETERMINING COMPLIANCE WITH THE APPLICABLE BUILDING CODES, OTHER CODES, LAWS AND REGULATIONS IS THE SOLE RESPONSIBILITY OF THE PURCHASER. INSTALLATION MUST BE PERFORMED BY A QUALIFIED INSTALLER FOLLOWING MANUFACTURER'S INSTRUCTIONS, OTHERWISE AUTOMATIC SYSTEMS' WARRANTIES MAY BE VOID.

MATERIAU/MATERIAL		FICHER FILENAME		DIMENSIONS		FORMAT		REV.		DATE		MODIFICATIONS/CHANGES		PAR/BY	
-		NAM-SLIM-EL-50-EN.DWG		-		B									
FABRICATION		TRAITEMENT/TREATMENT		-		-									
-		-		EBARBER LES ARÊTES VIVES BREAK ALL SHARP EDGES											
Nb./App.		POIDS/WEIGHT		SURFACE		FINI/FINISH		IMPERIAL		METRIC		TITRE		FEUILLE/SHEET	
-		-		-		-		X/X ±1/32"		X ±1mm		SLIMLANE 940SC - 950SC		2	
-		-		-		-		X.X ±0.030"		X.X ±0.5mm		TITLE		3	
-		-		-		-		X.XX ±0.015"		X.XX ±0.05mm		DESSINÉ PAR		DE/OF	
-		-		-		-		X.XXX ±0.005"		X.XX ±0.005"		ALE		N/A	
								ANGLES		± 1/2°		DATE		2016/06/07	
								SAUF SI INDIQUÉS UNLESS OTHERWISE NOTED				VÉRIFIÉ PAR		No. DESSIN/DWG. No.	
												SOS		NAM-SLIM-EL-50-EN	
												CHECKED BY		REV. A	

SLIMLANE SC (SHORT) TEMPLATE POSITIONING LAYOUT



NOTES:

- 1- THE NUMBER OF UNITS AND LANES MAY VARY DEPENDING ON CUSTOMER REQUIREMENTS. REFER TO CUSTOMER SPECIFIC LAYOUT FOR FINAL POSITIONING OF TEMPLATES.
- 2- FIXED TO FLOOR WITH CHEMICAL ANCHORS, DRILL $\phi 1/2"$ X 2-3/4" DEEP. ANCHORS PROVIDED BY ASA, CHEMICAL ADHESIVE TO BE SUPPLIED BY CUSTOMER.
- 3- HATCHED AREAS SHOW CONDUIT ENTRY ZONES.
- 4- LINEAR CUTOUTS TO HELP ALIGN TEMPLATE ON CHALK LINE.
- 5- FOLD AND BREAK TEMPLATE WHERE INDICATED TO INSTALL UNIT CLOSER TO THE WALL.

AUTOMATIC SYSTEMS MAKES NO REPRESENTATION AS TO THE PROPER POSITIONING OF THE SECURITY ENTRANCE LANES AT THE INSTALLATION LOCATION. ESTABLISHING THE LAYOUT AND PLACEMENT OF THE UNIT(S) AND DETERMINING COMPLIANCE WITH THE APPLICABLE BUILDING CODES, OTHER CODES, LAWS AND REGULATIONS IS THE SOLE RESPONSIBILITY OF THE PURCHASER. INSTALLATION MUST BE PERFORMED BY A QUALIFIED INSTALLER FOLLOWING MANUFACTURER'S INSTRUCTIONS, OTHERWISE AUTOMATIC SYSTEMS' WARRANTIES MAY BE VOID.

MATERIAU/MATERIAL		FICHER FILENAME NAM-SLIM-EL-50-EN.DWG		DIMENSIONS		FORMAT		REV.	DATE	MODIFICATIONS/CHANGES	PAR/BY
-		-		-		B					
FABRICATION		TRAITEMENT/TREATMENT		EBARBER LES ARÊTES VIVES BREAK ALL SHARP EDGES							
-		-		-							
Nb./App.		POIDS/WEIGHT		SURFACE		FINI/FINISH		TITRE			
-		-		-		-		SLIMLANE 940 - 950SC			
								TITRE			
								GENERIC ELECTRICAL CONNECTIONS AND CONDUITS LAYOUT			
								DESSINÉ PAR		ECHELLE/SCALE	
								DRAWN BY		DATE	
								ALE		2016/06/07	
								VÉRIFIÉ PAR		FEUILLE/SHEET	
								SOS		3	
								No. DESSIN/DWG. No.		DE/OF	
								NAM-SLIM-EL-50-EN		3	
								REV.		A	

LES INFORMATIONS CONTENUES SUR LES DESSINS DE ASA Inc. SONT CONFIDENTIELLES ET SONT LA PROPRIÉTÉ DE ASA Inc. TOUTES REPRODUCTIONS, DISTRIBUTIONS OU UTILISATIONS SONT INTERDITES SANS LA PERMISSION ÉCRITE DE ASA Inc.

INFORMATION DISCLOSED HERE IS CONFIDENTIAL AND IS THE PROPERTY OF ASA Inc., ANY REPRODUCTION, DISTRIBUTION OR USE IS PROHIBITED WITHOUT A WRITTEN CONSENT BY ASA Inc.

IMPERIAL
X/X ±1/32"
X.X ±0.030"
X.XX ±0.015"
X.XXX ±0.005"

METRIC
X ±1mm
X.X ±0.5mm
X.XX ±0.05mm

ANGLES ± 1/2°
SAUF SI INDIQUÉS
UNLESS OTHERWISE NOTED