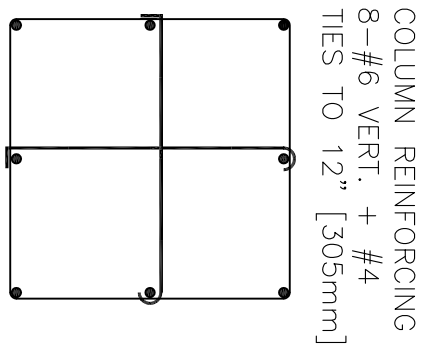
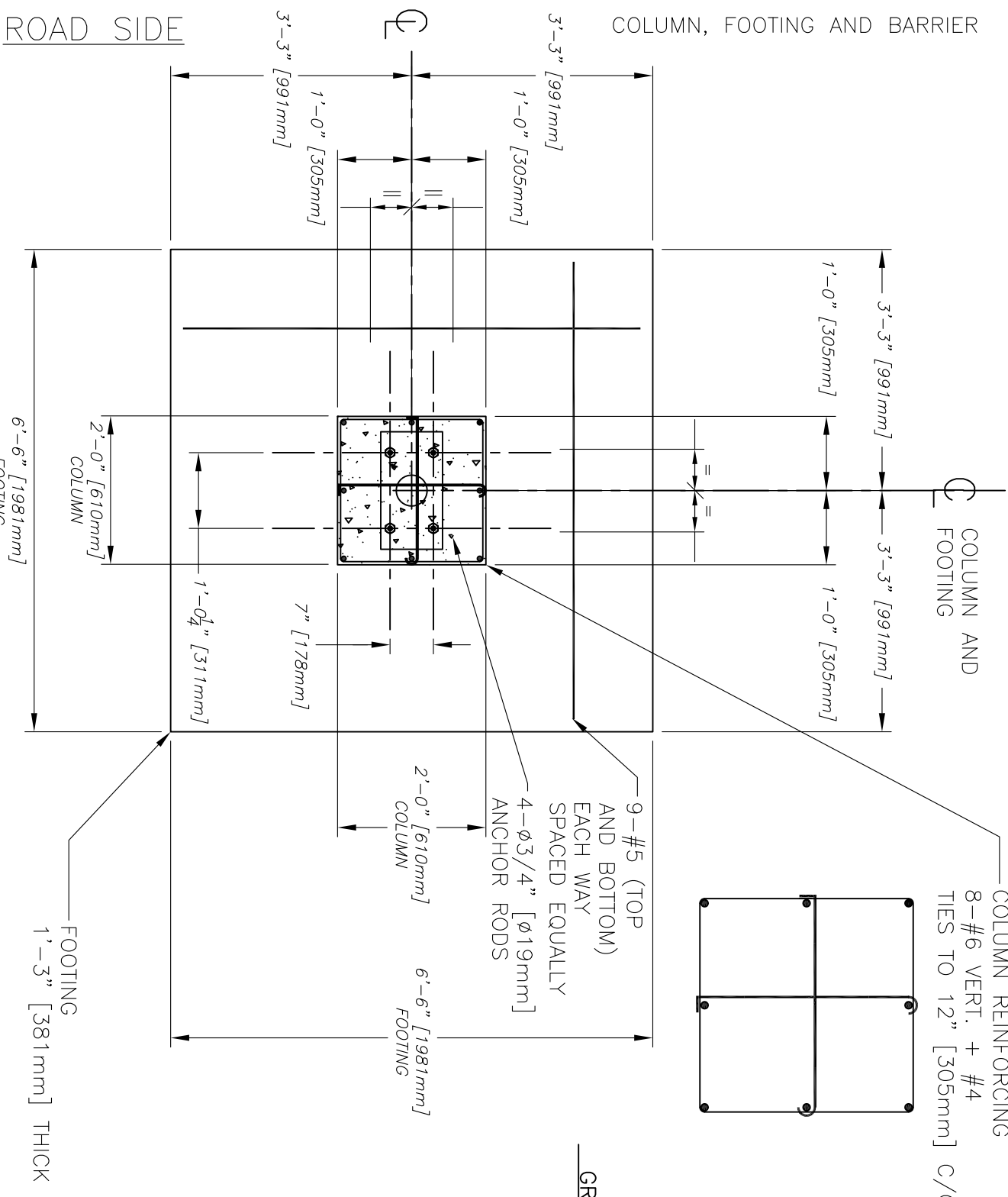
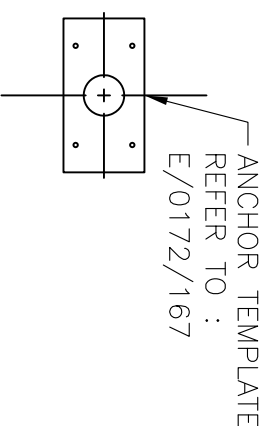


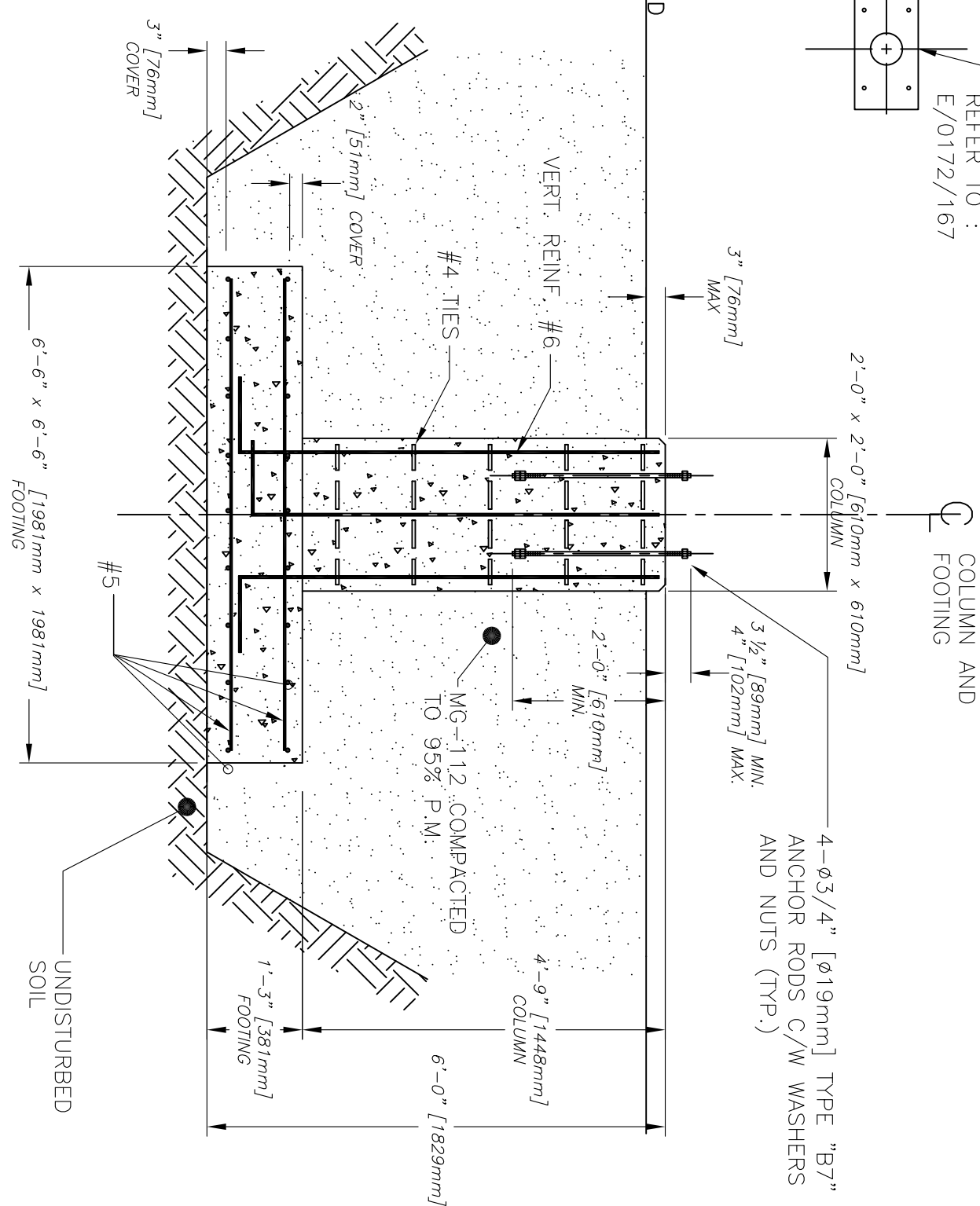
SECURE SIDE



COLUMN REINFORCING  
8-#6 VERT. + #4  
TIES TO 12" [305mm] C/C



ANCHOR TEMPLATE  
REFER TO :  
E/0172/167



ELEVATION - FOUNDATION

PLAN - FOUNDATION FOR AUTOMATIC BARRIER

METRIC UNITS BETWEEN BRACKETS ARE SOFT CONVERTED  
AND ARE NOT TO SCALE

ORIGINAL DRAWING : NO. 11164-2008  
FOR GENERAL NOTES, REFER TO DRAWING NO. 11164-2007

REV	DATE	MODIFICATIONS/CHANGES	PAR/BY
-	-	-	-

MATERIAL/MATERIAL	-
TREATMENT/TREATMENT	-
FIN/FINISH	-
NB/App.	PODS/WEIGHT SURFACE

LES DIMENSIONS SONT EN POUCES / DIMENSIONS ARE IN INCHES	EBARBER & ENLEVER LES ARÊTES VIVES. DIM. SELON ASME Y14.5 1994. NE PAS MESURER SUR LE DESSIN
TOLERANCES	BREAK ALL SHARP EDGES AND CORNERS. ALL DIM PER ASME Y14.5 1994. DO NOT SCALE DRAWING
XX XX XX RMC.	
ANGLES	UNLESS OTHERWISE NOTED

FOHBER / FILENAME  
NAM-BLG76-IN-11-EN.DWG

LAAR GROUP

LES INFORMATIONS CONTENUES SUR LES DESSINS DE ASA Inc.  
SONT CONFIDENTIELLES ET SONT LA PROPRIÉTÉ DE ASA Inc.  
TOUTES REPRODUCTIONS, DISTRIBUTIONS OU UTILISATIONS  
SONT INTERDITES SANS LA PERMISSION DE ASA Inc.

INFORMATION DISCLOSED HERE IS CONFIDENTIAL AND IS THE  
PROPERTY OF ASA Inc.. ANY REPRODUCTION, DISTRIBUTION OR  
USE IS PROHIBITED WITHOUT A WRITTEN CONSENT BY ASA Inc.

TITRE FOUNDATION FOR BLG76 AUTOMATIC BARRIER	EGD
DESSIN PAR EGD	SSA
VERIFIE PAR CHECKED BY	SSA
EGHELE/SCALE 1/2" = 1'-0"	B
FORMAT/SIZE 2013/02/20	1
FEUILLE/SHEET	2
NO. DE DESSIN/DWG. NO.	NAM-BLG76-IN-11-EN A
REV	

# GENERAL NOTES

## GENERAL INFORMATION

ON-SITE, THE CONTRACTOR SHALL VERIFY ALL DIMENSIONS AND LOCATIONS SHOWN ON THE PLANS. THE CONTRACTOR SHALL ALSO VERIFY ALL MEASUREMENTS OF THE NEW CONSTRUCTION BEFORE STARTING ANY FABRICATION. FOLLOWING THESE VERIFICATIONS, NOTIFY OWNER OF ANY MODIFICATIONS REQUIRED ON PLANS

## EXCAVATION AND BACKFILL

BACKFILL MATERIALS SHALL BE MG-112\* GRANULAR MATERIAL COMPACTED BY 12” [305mm] LAYERS COMPACTED TO 95% OF THE MODIFIED PROCTOR.

\*MG-112 : CLASS A SAND WITH AROUND 109 lb/ft<sup>3</sup> [1750 kg/m<sup>3</sup>] MODIFIED PROCTOR (ASTM D1557 & AASHTO T180), RESISTANT TO FREEZING, CLEANED AND CRIBBED TO BE EXEMPT OF ORGANIC MATTER. GRANULOMETRIC ANALYSIS : 12-100% PASSING THROUGH 0.196in [5,0mm] CRIB (US NO.4), 0-10% PASSING THROUGH 0.003in [0,080mm] CRIB (US NO.200)

ENSURE PROPER DRAINAGE OF SOIL AROUND THE NEW FOUNDATION. WATER SHALL NOT ACCUMULATE AROUND THE FOUNDATION

## CAST IN PLACE CONCRETE

CAST IN PLACE CONCRETE SHALL BE DONE ACCORDING TO LOCAL CODES

2. MATERIAL :
  - PORTLAND CEMENT : ASTM C150, TYPE 1
  - AIR-ENTRAINING AGENT : ASTM C260-00.
  - STEEL REINFORCEMENT : BILLET STEEL GRADE 60 COMPLIANT TO ASTM A615M
  - WELDED WIRE FABRIC : ASTM A 185

3. CONCRETE CHARACTERISTICS

- COMPRESSIVE STRENGTH AT 28 DAYS : 4350 psi [30MPa]
- MAXIMUM AGGREGATE :  $\phi 3/4"$  [ $\phi 19mm$ ]
- MAX WATER/CEMENT RATIO : 0.50
- SLUMP : 3" $\pm$ 1" [76mm  $\pm$  25mm]
- ENTRAINED AIR : 5 TO 8%

## CAST IN PLACE CONCRETE (CONTINUED)

4. REINFORCEMENT CONCRETE COVER :
  - CONCRETE CAST AGAINST EARTH : 3" [76mm]
  - CONCRETE EXPOSED TO WATER, EARTH AND WEATHER : 2" [51mm]
5. UNLESS OTHERWISE SPECIFIED, LAP SLICES OF REINFORCEMENT SHALL BE CLASS B ACCORDING TO ACI 318 AND HOOKS SHALL BE OF STANDARD DIMENSIONS. STIRRUPS SHALL BE BENT 135 DEGREES AT JOINTS (TYPE T1).

6. ON-SITE BENDING OF REINFORCEMENT IS FORBIDDEN

7. CHARACTERISTICS OF NON SHRINK CEMENT GROUT :
  - COMPRESSIVE STRENGTH AT 28 DAYS : 7252 psi [50 MPa]
  - ACCEPTED PRODUCT : SIKAGROUT 212 OR EQUIVALENT APPROVED BY THE OWNER ENGINEER

8. VIBRATE CONCRETE WHILE PLACING

9. ALL VISIBLE CONCRETE SHARP EDGES SHALL BE CHAMFERED 1" [25mm]

10. HOLES LEFT FROM TIES SHALL BE FILLED WITH GROUT

## DESIGN CRITERIA

1. THE SOIL UNDERNEATH THE FOUNDATION SHALL HAVE A BEARING CAPACITY OF AT LEAST 1600 psf [75 kPa]
2. THE SOIL WHERE THE FOUNDATION IS TO BE CONSTRUCTED SHALL BE WELL DRAINED WITH THE WATER TABLE ELEVATION AT A MINIMUM OF 3'-0" [914mm] BELOW UNDERSIDE OF FOUNDATION
3. THE BARRIER SHALL NOT BE RAISED IF THERE IS ANY ICE ACCUMULATION

REV	DATE	MODIFICATIONS/CHANGES	PAR/BR

MATERIAL/MATERIAL	-	SURFACE
TRAITEMENT/TREATMENT	-	
FIN/FINISH	-	
NB/APP.	-	-
POIDS/WEIGHT	-	-

LES DIMENSIONS SONT EN POUCES / DIMENSIONS ARE IN INCHES	LES ARETES VIVES. DIM SELON ASME Y14.5 1994. NE PAS MESURER SUR LE DESSIN
TOLERANCES	BREAK ALL SHARP EDGES AND CORNERS. ALL DIM PER ASME Y14.5 1994. DO NOT SCALE DRAWING
XX XX X RMC ANGLES	$\pm .005$ $\pm .010$ $\pm .015$ $\pm .1/32$ $\pm 1/2$
UNLESS OTHERWISE NOTED	SAUF SI INDIQUES SCALES DRAWING

<b>EBARBER &amp; ENLEVER</b>	
LES ARETES VIVES. DIM SELON ASME Y14.5 1994. NE PAS MESURER SUR LE DESSIN	
BREAK ALL SHARP EDGES AND CORNERS. ALL DIM PER ASME Y14.5 1994. DO NOT SCALE DRAWING	
NUMBER / FILENAME	<b>NAM-BLG76-IN-11-EN.DWG</b>

LES INFORMATIONS CONTENUES SUR LES DESSINS DE ASA Inc.  
SONT CONFIDENTIELLES ET SONT LA PROPRETE DE ASA Inc.,  
TOUTES REPRODUCTIONS, DISTRIBUTIONS OU UTILISATIONS  
SONT INTERDITES SANS LA PERMISSION DE ASA Inc.

INFORMATION DISCLOSED HERE IS CONFIDENTIAL AND IS THE  
PROPERTY OF ASA Inc., ANY REPRODUCTION, DISTRIBUTION OR  
USE IS PROHIBITED WITHOUT A WRITTEN CONSENT BY ASA Inc.

TITRE  
**GENERAL NOTES FOR BLG76  
AUTOMATIC BARRIER FOUNDATION**

DESINE PAR  
DRAWN BY **EGD**

VERIFIE PAR CHECKED BY <b>SSA</b>	NO. DE DESSIN/DWG NO. <b>NAM-BLG76-IN-11-EN</b>	FEUILLE/SHEET <b>2</b>	REV <b>A</b>
DATE <b>2013/03/05</b>	FORMA/T/SIZE <b>B</b>	DATE <b>2013/03/05</b>	REV <b>2</b>
DATE <b>2013/03/05</b>	FORMA/T/SIZE <b>B</b>	DATE <b>2013/03/05</b>	REV <b>2</b>

