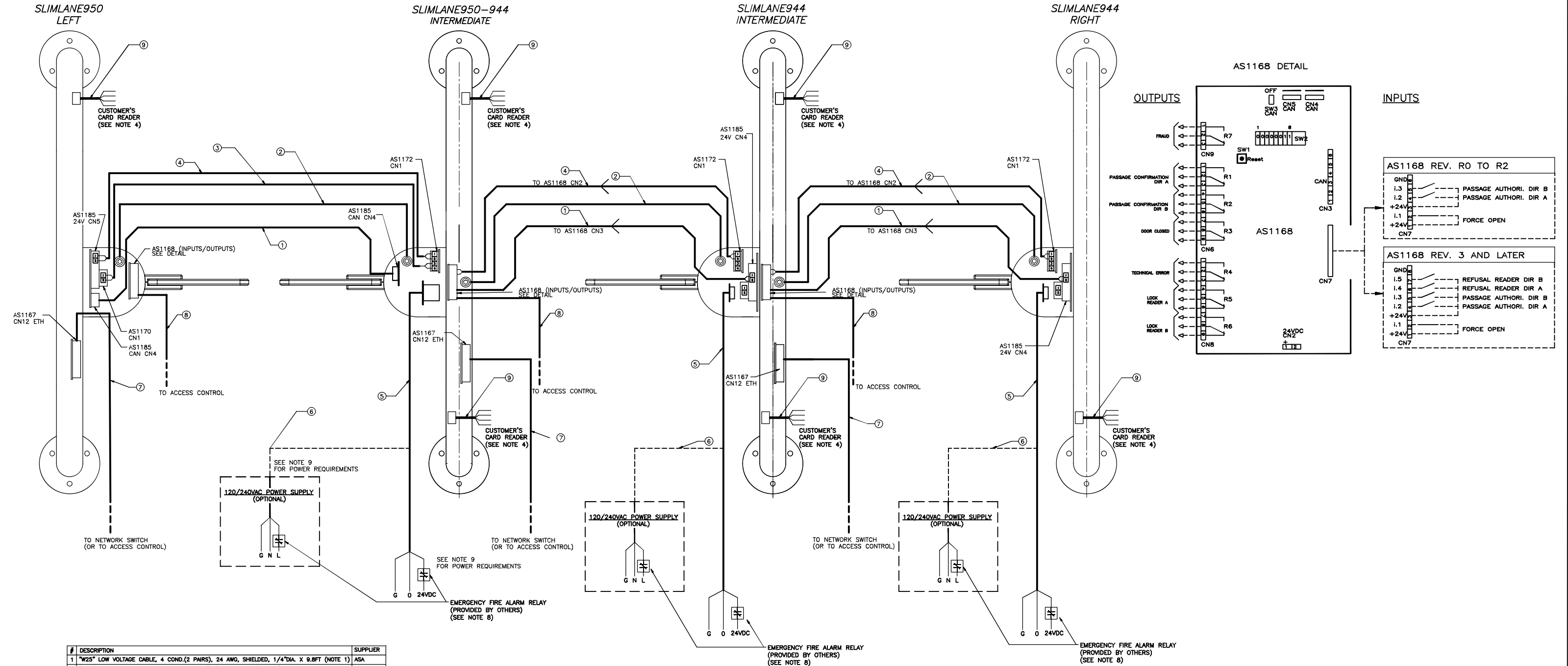


ELECTRICAL CONNECTIONS



| # | DESCRIPTION | SUPPLIER |
|---|--|----------|
| 1 | "W25" LOW VOLTAGE CABLE, 4 COND.(2 PAIRS), 24 AWG, SHIELDED, 1/4"DIA. X 9.8FT (NOTE 1) | ASA |
| 2 | "W10" GROUND CABLE, 1 COND., 14 AWG, 9/64"DIA. X 6.5FT (NOTE 1) | ASA |
| 3 | "W14" LOW VOLTAGE CABLE, 2 COND., 18 AWG SHIELDED, 1/4" DIA. X 9.8FT (NOTE 1) | ASA |
| 4 | "W13" LOW VOLTAGE CABLE, 2 COND., 18 AWG SHIELDED, 1/4" DIA. X 9.8FT (NOTE 1) | ASA |
| 5 | POWER CABLE, 3 COND. 12GA, MAX LENGTH : 100' (NOTE 1 & NOTE 2) | CUSTOMER |
| 6 | POWER CABLE, 3 COND. 12GA, (IF 120V OPTION SELECTED) (NOTE 2) | CUSTOMER |
| 7 | ETHERNET CABLE, CAT 6 | CUST/OPT |
| 8 | I/O CABLE (NOTE 6) | CUSTOMER |
| 9 | READER CABLE (DEPENDS ON SELECTED READER) | CUSTOMER |

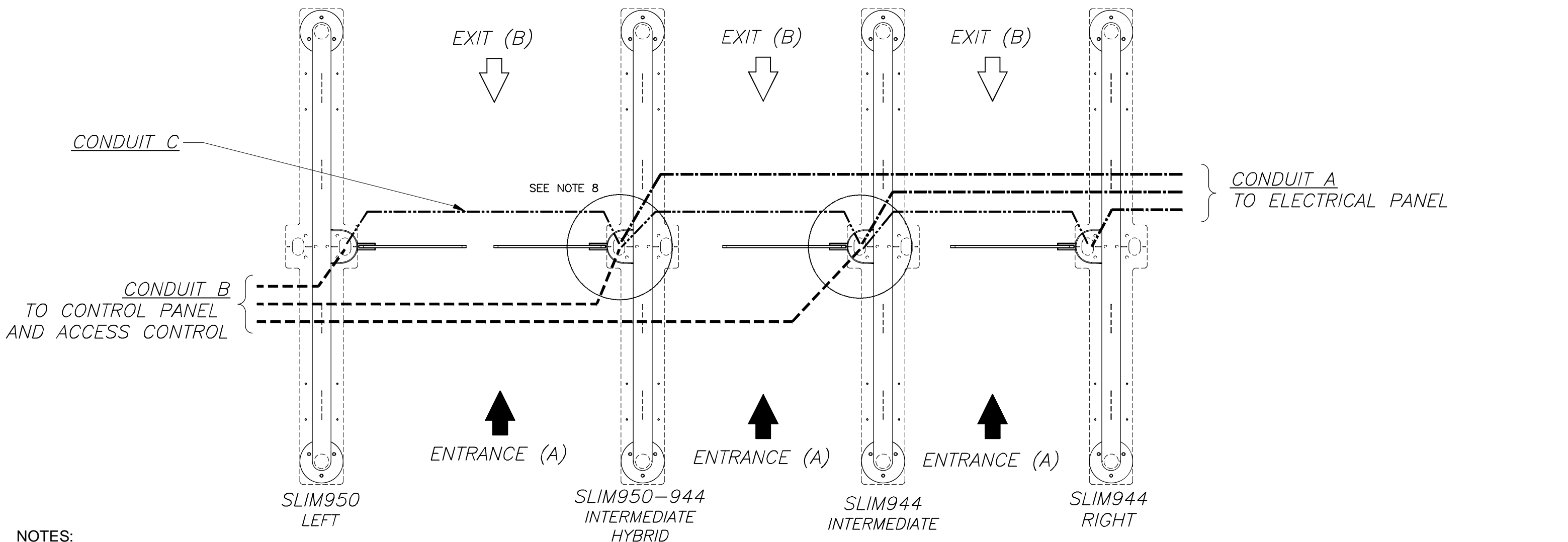
NOTE 1: IF THE INSTALLATION REQUIRES LONGER CABLES, PLEASE CONTACT AUTOMATIC SYSTEMS.
NOTE 2: AS A REFERENCE ONLY. RESPECT ALL LOCAL STANDARDS AND LAWS.
NOTE 4: CARD READER INSTALLED ON RIGHT SIDE OF UNITS IN RELATION TO PASSAGE DIRECTION.
NOTE 5: ALL INPUTS ARE NORMALLY OPENED, EXCEPT FOR THE FORCE OPEN CONTACT.
NOTE 6: THE NUMBER OF CONDUCTORS AND WIRE GAUGE IS DETERMINED BY THE CUSTOMER AND DEPENDS ON THE INPUTS AND OUTPUTS REQUIRED, REFER TO "AS1168 DETAIL" VIEW.
NOTE 7: FOR DETAILED ELECTRICAL DIAGRAM REFER TO NAM-SLIM-EL-EN-13.
NOTE 8: FOR NON FIRE EMERGENCIES, THE FORCE OPEN CONTACT ON AS1168 BOARD MAY BE USED TO HOLD OPEN THE LANE (INSTEAD OF CUTTING POWER). IT IS THE RESPONSIBILITY OF THE INTEGRATOR/CUSTOMER TO VERIFY IF A SOFTWARE OPENING RESPECTS LOCAL STANDARDS AND LAWS.
NOTE 9: POWER REQUIREMENT: FOR 24VDC POWER SUPPLY: 15 A
FOR 120VAC POWER SUPPLY: 6 A

AUTOMATIC SYSTEMS MAKES NO REPRESENTATION AS TO THE PROPER POSITIONING OF THE SECURITY ENTRANCE LANES AT THE INSTALLATION LOCATION. ESTABLISHING THE LAYOUT AND PLACEMENT OF THE UNIT(S) AND DETERMINING COMPLIANCE WITH THE APPLICABLE BUILDING CODES, OTHER CODES, LAWS AND REGULATIONS IS THE SOLE RESPONSIBILITY OF THE PURCHASER. INSTALLATION MUST BE PERFORMED BY A QUALIFIED INSTALLER FOLLOWING MANUFACTURER'S INSTRUCTIONS, OTHERWISE AUTOMATIC SYSTEMS' WARRANTIES MAY BE VOID.

| | | | |
|---|--|---|--|
| MATÉRIEL/MATERIAL | FICHIER FILENAME | NAM-SLIM-EL-12-EN.DWG | |
| FABRICATION | TRAITEMENT/TREATMENT | EBARBER LES ARÊTES VIVES BREAK ALL SHARP EDGES | |
| Nb./App. | POIDS/WEIGHT | SURFACE | FINI/FINISH |
| | | | |
| LES INFORMATIONS CONTENUES SUR LES DESSINS DE ASA Inc. SONT CONFIDENTIELLES ET SONT LA PROPRIÉTÉ DE ASA Inc. TOUTES REPRODUCTIONS, DISTRIBUTIONS OU UTILISATIONS SONT INTERDITES SANS LA PERMISSION ÉCRITE DE ASA Inc. | | | |
| INFORMATION DISCLOSED HERE IS CONFIDENTIAL AND IS THE PROPERTY OF ASA Inc., ANY REPRODUCTION, DISTRIBUTION OR USE IS PROHIBITED WITHOUT A WRITTEN CONSENT BY ASA Inc. | | | |
| | IMPERIAL X/X ±1/32" X.X ±0.030" X.XX ±0.015" X.XXX ±0.005" | METRIC X ±1mm X.X ±0.5mm X.XX ±0.05mm | ANGLES ± 1/2° SAUF SI INDICUÉS UNLESS OTHERWISE NOTED |

| | | | |
|-------------|--|---------------------|-------------------|
| DIMENSIONS | FORMAT | B | |
| | | | |
| TITRE | SLIMLANE SL950/944 | | |
| TITLE | GENERIC ELECTRICAL CONNECTIONS AND CONDUITS LAYOUT | | |
| DESSINÉ PAR | SOS | ECHELLE/SCALE | N/A |
| DRAWN BY | SOS | DATE | 2014/06/14 |
| VÉRIFIÉ PAR | - | No. DESSIN/DWG. No. | NAM-SLIM-EL-12-EN |
| CHECKED BY | - | REV. | B |

CONDUITS LAYOUT FOR VARIOUS UNITS



NOTES:

- 1- THE NUMBER OF UNITS AND LANES MAY VARY DEPENDING ON CUSTOMER REQUIREMENTS, REFER TO CUSTOMER SPECIFIC LAYOUT TO ADJUST THE NUMBER OF CONDUITS ACCORDINGLY.
- 2- ALL WIRING MUST MEET OR EXCEED STANDARDS AND CODES AND MUST BE INSTALLED BY A CERTIFIED TECHNICIAN.
- 3- 10' OF CABLE RUN MUST BE LEFT UNBURIED.
- 4- INSTALLATION OF A PULLING LINE BETWEEN EACH GATE IS RECOMMENDED.
- 5- UNITS MUST BE SECURED TO STRUCTURAL FLOOR WITH PROVIDED HARDWARE PRIOR TO USE
- 6- CONDUITS SHALL BE BURIED AT LEAST 5" BELOW THE FINISHED FLOOR SURFACE TO AVOID CONTACT WITH ANCHORS (2-3/4" LONG).

- 7- CONDUIT DETAILS:
CONDUIT A- USE : POWER CABLE (TO ELECTRICAL PANEL)
SIZE : PVC 3/4"
NOTE: SEPARATE POWER FEEDS ARE NECESSARY FOR EACH RIGHT AND INTERMEDIATE UNITS (CABLE SUPPLIED BY CUSTOMER).
- CONDUIT B- USE : CONTROL PANEL AND ACCESS CONTROL (READERS, BIOMETRIC ETC...) CABLES.
SIZE : PVC 3/4" OR 1" MAX.
NOTE: CONDUIT TO EACH LEFT AND INTERMEDIATE UNITS. LOW VOLTAGE CABLES ONLY (CABLES SUPPLIED BY CUSTOMER, IF APPLICABLE)
- CONDUIT C- USE: LOW VOLTAGE INTERCONNECTION CABLES.
SIZE : PVC 3/4"
NOTE: 1 CONDUIT PER LANE (CABLES SUPPLIED BY ASA).

8- CONDUITS MUST BE TERMINATED UNDER THE FLOOR SURFACE SINCE THE ENTRY AREA HAS VERY LIMITED SPACE (SEE DETAIL A ON NEXT PAGE).

CONDUIT A

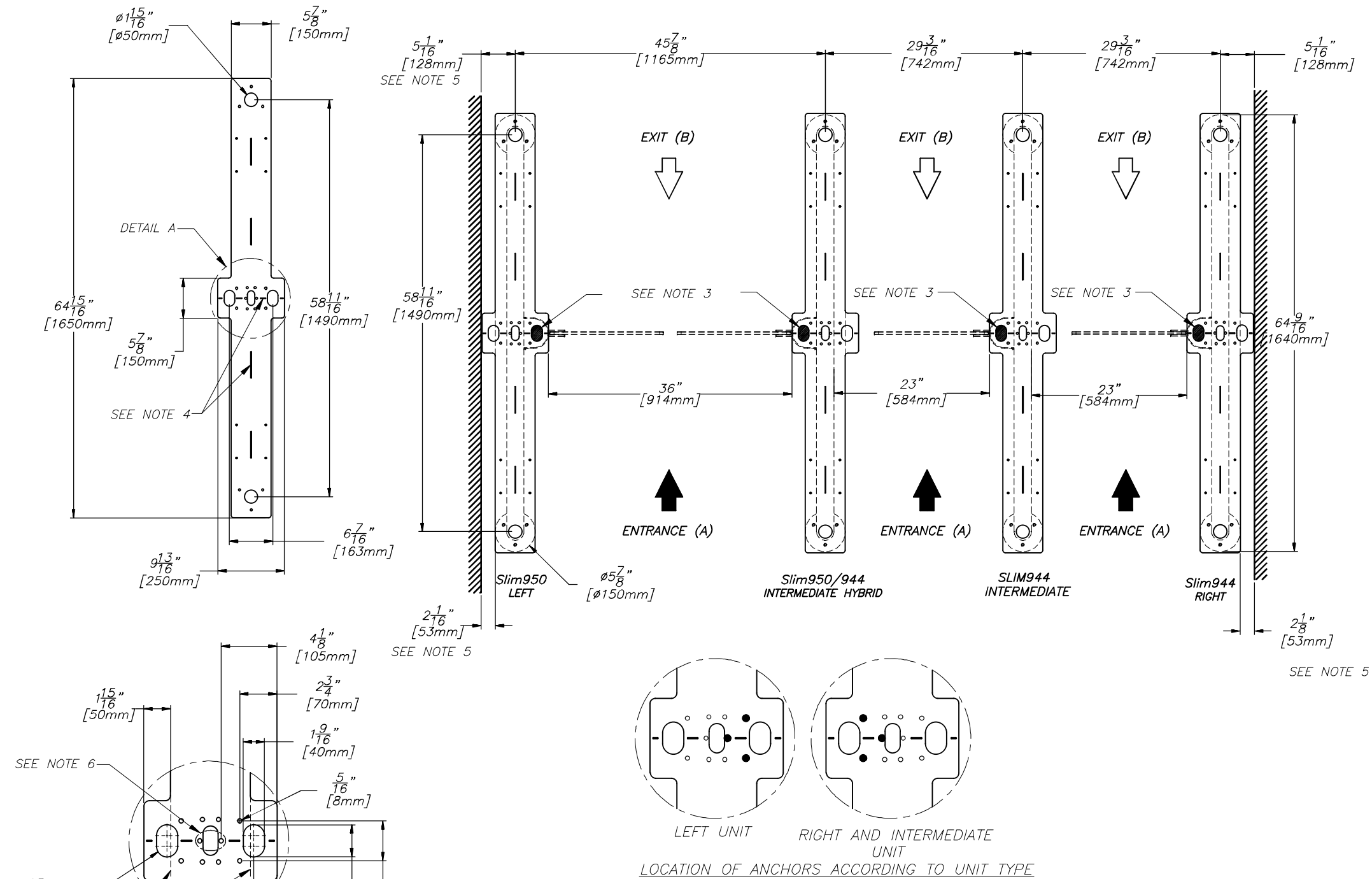
CONDUIT B

CONDUIT C

AUTOMATIC SYSTEMS MAKES NO REPRESENTATION AS TO THE PROPER POSITIONING OF THE SECURITY ENTRANCE LANES AT THE INSTALLATION LOCATION. ESTABLISHING THE LAYOUT AND PLACEMENT OF THE UNIT(S) AND DETERMINING COMPLIANCE WITH THE APPLICABLE BUILDING CODES, OTHER CODES, LAWS AND REGULATIONS IS THE SOLE RESPONSIBILITY OF THE PURCHASER. INSTALLATION MUST BE PERFORMED BY A QUALIFIED INSTALLER FOLLOWING MANUFACTURER'S INSTRUCTIONS, OTHERWISE AUTOMATIC SYSTEMS' WARRANTIES MAY BE VOID.

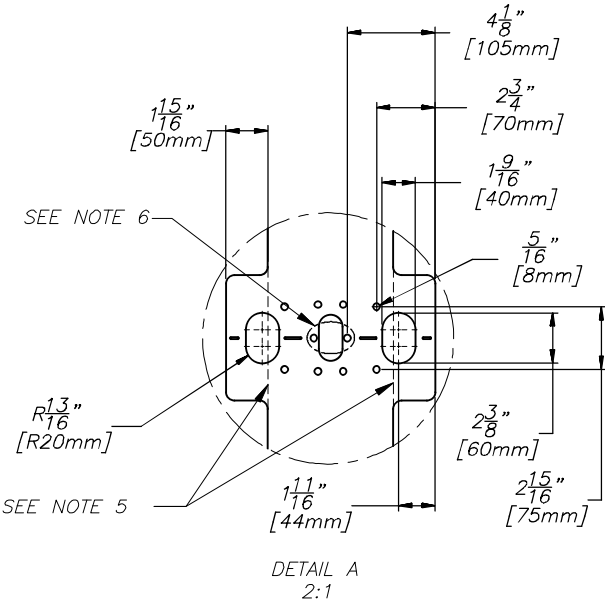
| | | | | | | | | | | |
|---|-------------------|--|------------------|--|---|--------------------------------|--|--|--|--------------------|
| MATÉRIAU/MATERIAL — | | FICHIER FILENAME NAM-SLIM-EL-12-EN.DWG | | | DIMENSIONS — | FORMAT B | | | | |
| FABRICATION — | | TRAITEMENT/TREATMENT — EBARBER LES ARÊTES VIVES BREAK ALL SHARP EDGES | | | | | | | | |
| Nb./App. — | POIDS/WEIGHT — | SURFACE — | FINI/FINISH — | IMPERIAL X/X ±1/32" X.X ±0.030" X.XX ±0.015" X.XXX ±0.005" | METRIC X.X ±1mm X.X ±0.5mm X.XX ±0.05mm X.XXX ±0.005" | TITRE SLIMLANE SL950/944 | | | | |
| LES INFORMATIONS CONTENUES SUR LES DESSINS DE ASA Inc. SONT CONFIDENTIELLES ET SONT LA PROPRIÉTÉ DE ASA Inc. TOUTES REPRODUCTIONS, DISTRIBUTIONS OU UTILISATIONS SONT INTERDITES SANS LA PERMISSION ÉCRITE DE ASA Inc. | | | | TITLE GENERIC ELECTRICAL CONNECTIONS AND CONDUITS LAYOUT | | | | | | |
| | | | | DESSINÉ PAR DRAWN BY SOS | | ÉCHELLE/SCALE N/A | | DATE 2014/06/14 | | FEUILLE/SHEET 2 |
| INFORMATION DISCLOSED HERE IS CONFIDENTIAL AND IS THE PROPERTY OF ASA Inc., ANY REPRODUCTION, DISTRIBUTION OR USE IS PROHIBITED WITHOUT A WRITTEN CONSENT BY ASA Inc. | | | | ANGLES ± 1/2 ° SAUF SI INDICUÉS UNLESS OTHERWISE NOTED | | VÉRIFIÉ PAR CHECKED BY — | | No. DESSIN/DWG. No. NAM-SLIM-EL-12-EN | | REV. B |

SLIMLANE TEMPLATE POSITIONING LAYOUT



NOTES:

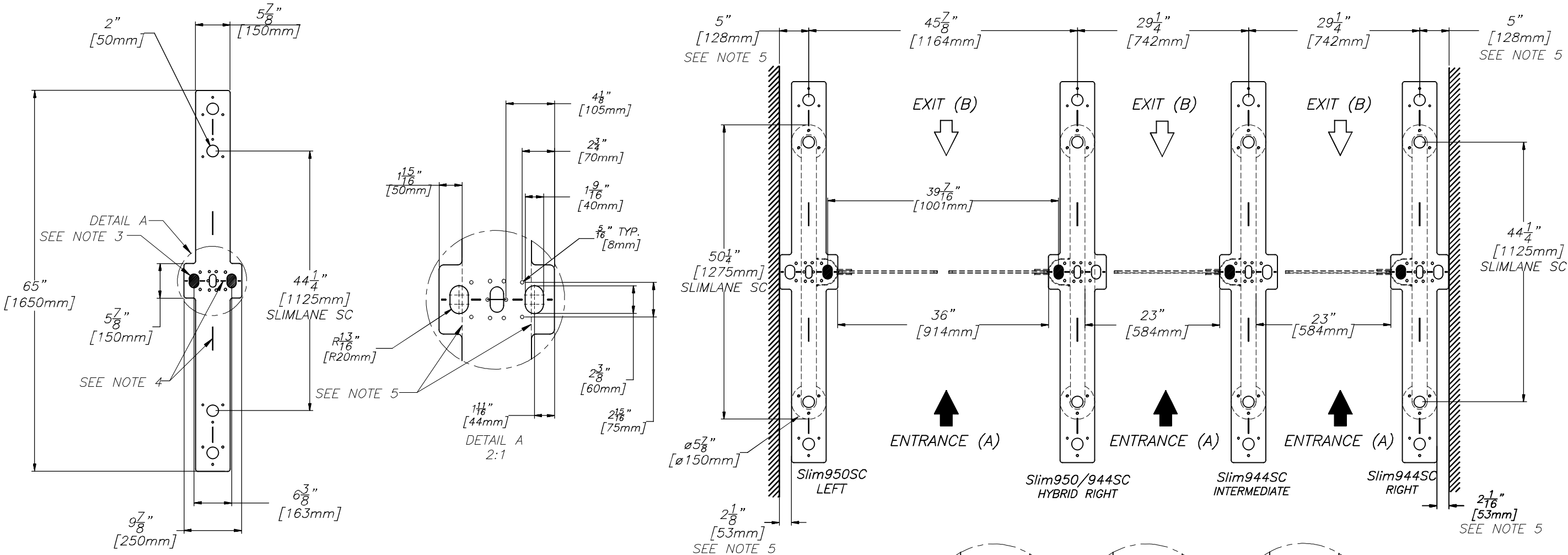
- 1- THE NUMBER OF UNITS AND LANES MAY VARY DEPENDING ON CUSTOMER REQUIREMENTS. REFER TO CUSTOMER SPECIFIC LAYOUT FOR FINAL POSITIONING OF TEMPLATES.
- 2- UNITS FIXED TO FLOOR WITH CHEMICAL ANCHORS, DRILL $\varnothing 1/2"$ X 2-3/4" DEEP.
ANCHORS PROVIDED BY ASA, CHEMICAL ADHESIVE TO BE SUPPLIED BY CUSTOMER.
- 3- HATCHED AREAS SHOW CONDUIT ENTRY ZONES.
- 4- LINEAR CUTOUTS TO HELP ALIGN TEMPLATE ON CHALK LINE.
- 5- TEMPLATE CAN BE CUT WHERE INDICATED TO INSTALL UNIT CLOSER TO THE WALL.



AUTOMATIC SYSTEMS MAKES NO REPRESENTATION AS TO THE PROPER POSITIONING OF THE SECURITY ENTRANCE LANES AT THE INSTALLATION LOCATION. ESTABLISHING THE LAYOUT AND PLACEMENT OF THE UNIT(S) AND DETERMINING COMPLIANCE WITH THE APPLICABLE BUILDING CODES, OTHER CODES, LAWS AND REGULATIONS IS THE SOLE RESPONSIBILITY OF THE PURCHASER. INSTALLATION MUST BE PERFORMED BY A QUALIFIED INSTALLER FOLLOWING MANUFACTURER'S INSTRUCTIONS, OTHERWISE AUTOMATIC SYSTEMS' WARRANTIES MAY BE VOID.

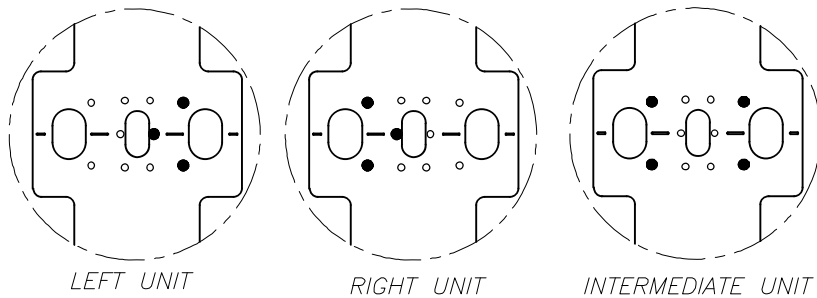
| | | | | | | | | | | |
|--|-------------------|---|------------------|--|--|--|--|--|--|--|
| MATERIAU/MATERIAL — | | FICHIER FILENAME NAM—SLIM—EL—12—EN.DWG | | | DIMENSIONS — | FORMAT B | | | | |
| FABRICATION — | | TRAITEMENT/TREATMENT EBARBER LES ARÊTES VIVES BREAK ALL SHARP EDGES | | | | | | | | |
| Nb./App. — | POIDS/WEIGHT — | SURFACE — | FINI/FINISH — | IMPERIAL X/X ±1/32" X.X ±0.030" X.XX ±0.015" X.XXX ±0.005" | METRIC X ±1mm X.X ±0.5mm X.XX ±0.05mm | TITRE SLIMLANE SL950/944 TITLE GENERIC ELECTRICAL CONNECTIONS AND CONDUITS LAYOUT | | | | |
| LES INFORMATIONS CONTENUES SUR LES DESSINS DE ASA Inc. SONT CONFIDENTIELLES ET SONT LA PROPRIÉTÉ DE ASA Inc. TOUTES REPRODUCTIONS, DISTRIBUTIONS OU UTILISATIONS SONT INTERDITES SANS LA PERMISSION ÉCRITE DE ASA Inc. INFORMATION DISCLOSED HERE IS CONFIDENTIAL AND IS THE PROPERTY OF ASA Inc., ANY REPRODUCTION, DISTRIBUTION OR USE IS PROHIBITED WITHOUT A WRITTEN CONSENT BY ASA Inc. | | | | ANGLES ± 1/2 ° | DESSINÉ PAR SOS DRAWN BY SOS | | | | | ÉCHELLE/SCALE N/A DATE 2014/06/14 FEUILLE/SHEET 3 DE/OF 4 |
| | | | | SAUF SI INDICUÉS UNLESS OTHERWISE NOTED | VÉRIFIÉ PAR CHECKED BY — | | | | | No. DESSIN/DWG. No. NAM—SLIM—EL—12—EN |

SLIMLANE SC (SHORT) TEMPLATE POSITIONING LAYOUT




NOTES:

- 1- THE NUMBER OF UNITS AND LANES MAY VARY DEPENDING ON CUSTOMER REQUIREMENTS. REFER TO CUSTOMER SPECIFIC LAYOUT FOR FINAL POSITIONING OF TEMPLATES.
- 2- FIXED TO FLOOR WITH CHEMICAL ANCHORS, DRILL $\phi 1/2"$ X 2-3/4" DEEP. ANCHORS PROVIDED BY ASA, CHEMICAL ADHESIVE TO BE SUPPLIED BY CUSTOMER.
- 3- HATCHED AREAS SHOW CONDUIT ENTRY ZONES.
- 4- LINEAR CUTOUTS TO HELP ALIGN TEMPLATE ON CHALK LINE.
- 5- TEMPLATE CAN BE CUT WHERE INDICATED TO INSTALL UNIT CLOSER TO THE WALL.



LOCATION OF ANCHORS ACCORDING TO UNIT TYPE

AUTOMATIC SYSTEMS MAKES NO REPRESENTATION AS TO THE PROPER POSITIONING OF THE SECURITY ENTRANCE LANES AT THE INSTALLATION LOCATION. ESTABLISHING THE LAYOUT AND PLACEMENT OF THE UNIT(S) AND DETERMINING COMPLIANCE WITH THE APPLICABLE BUILDING CODES, OTHER CODES, LAWS AND REGULATIONS IS THE SOLE RESPONSIBILITY OF THE PURCHASER. INSTALLATION MUST BE PERFORMED BY A QUALIFIED INSTALLER FOLLOWING MANUFACTURER'S INSTRUCTIONS, OTHERWISE AUTOMATIC SYSTEMS' WARRANTIES MAY BE VOID.

| | | | | | | | | | | | | | | | | | | |
|---|--------------|----------------------|-------------|---|--|--|--|--------|--|--|--|--|--------------------|--|--------------------|--|------------|--|
| MATERIAU/MATERIAL | | FICHIER FILENAME | | NAM-SLIM-EL-12-EN.DWG | | | DIMENSIONS | FORMAT |  FOR GROUP | | | | | | | | | |
| FABRICATION | | TRAITEMENT/TREATMENT | | EBARBER LES ARÊTES VIVES BREAK ALL SHARP EDGES | | | - | B | | | | | | | | | | |
| Nb./App. | POIDS/WEIGHT | SURFACE | FINI/FINISH | | IMPERIAL X/X $\pm 1/32''$ X.X $\pm 0.030''$ X.XX $\pm 0.015''$ X.XXX $\pm 0.005''$ | METRIC X $\pm 1mm$ X.X $\pm 0.5mm$ X.XX $\pm 0.05mm$ X.XXX $\pm 0.005''$ | TITRE SLIMLANE SL950/944 | | | | | | | | | | | |
| LES INFORMATIONS CONTENUES SUR LES DESSINS DE ASA Inc. SONT CONFIDENTIELLES ET SONT LA PROPRIÉTÉ DE ASA Inc. TOUTES REPRODUCTIONS, DISTRIBUTIONS OU UTILISATIONS SONT INTERDITES SANS LA PERMISSION ÉCRITE DE ASA Inc. | | | | | | | TITRE GENERIC ELECTRICAL CONNECTIONS AND CONDUITS LAYOUT | | | | | | | | | | | |
| INFORMATION DISCLOSED HERE IS CONFIDENTIAL AND IS THE PROPERTY OF ASA Inc., ANY REPRODUCTION, DISTRIBUTION OR USE IS PROHIBITED WITHOUT A WRITTEN CONSENT BY ASA Inc. | | | | | | | DESSINÉ PAR DRAWN BY | | SOS | | ECHELLE/SCALE N/A | | DATE 2014/06/14 | | FEUILLE/SHEET 4 | | DE/OF 4 | |
| ANGLES $\pm 1/2^\circ$ SAUF SI INDIQUEZ UNLESS OTHERWISE NOTED | | | | | | | VÉRIFIÉ PAR CHECKED BY | | - | | No. DESSIN/DWG. No. NAM-SLIM-EL-12-EN | | REV. B | | | | | |