

Safety notice

The barrier must be inspected frequently to detect any wear, corrosion or cracks that may cause damage, especially if the barrier is under excessive use (frequent opening before the end of the closing cycle).

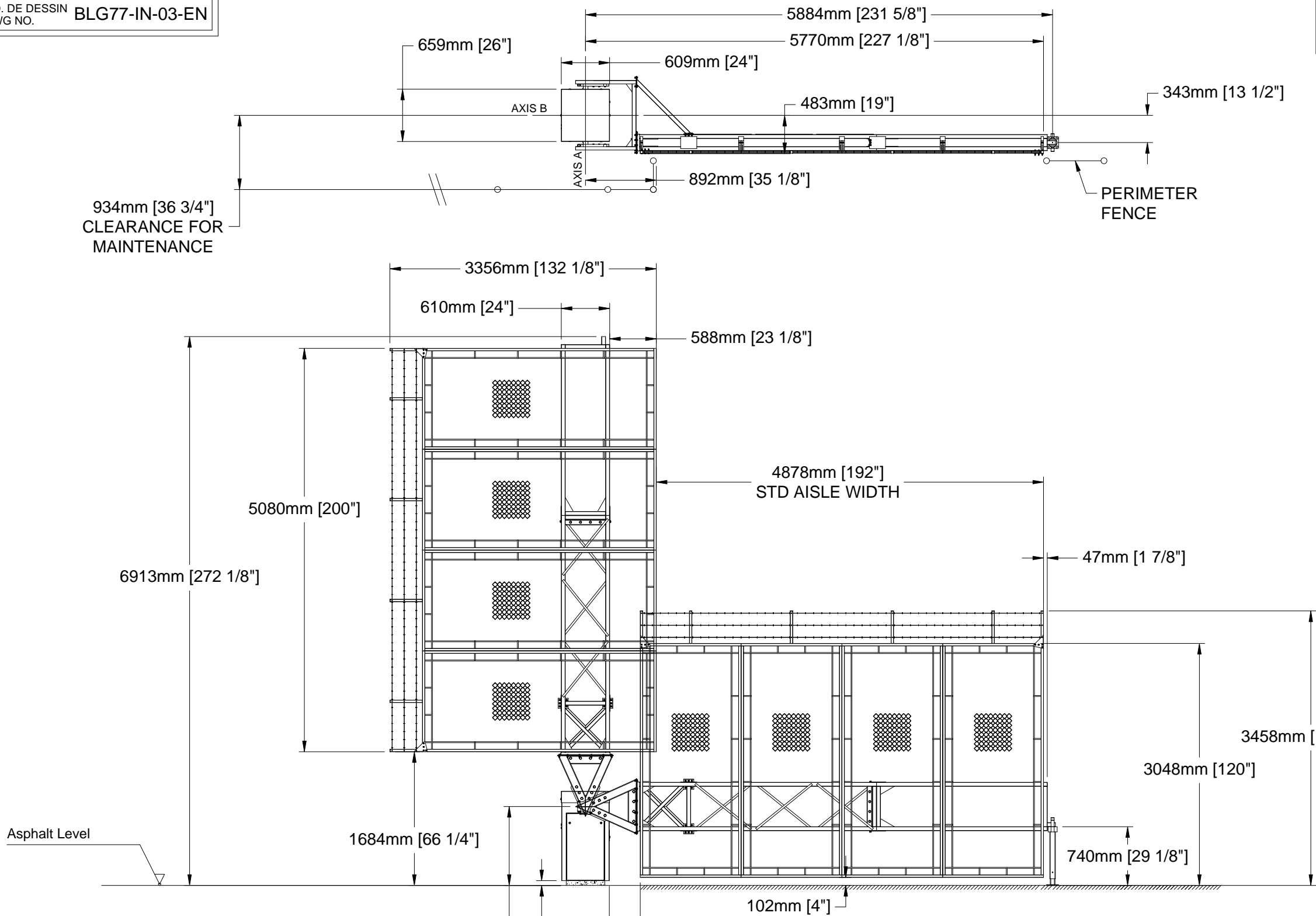
If the barrier is damaged or hit, it must be inspected by qualified personnel to detect any damages or cracks.

The barrier and the fence must be cleaned of all ice or snow accumulation to avoid extra weight.

No objects (light, sign etc.) must be added to the barrier.

The fence must not be modified without authorization of Automatic Systems America Inc.

The barrier must be put out of service if cracks appear or if the safety of people is compromised.



NOTES:

1- AUTOMATIC SYSTEMS RECOMMENDS THAT THE CONCRETE BASE FOR THE BARRIER BE FABRICATED ACCORDING TO DRAWING "1164-2003-2004_TYPICAL BLG77 CONCRETE BASE". HOWEVER IT IS THE CUSTOMER'S RESPONSIBILITY TO ENSURE THAT THE INSTALLATION CONFORMS TO ALL LOCAL BUILDING CODES.

2- FOR CONDUIT LAYOUT REFER TO NAM-BLG77-CONDUITS-IN-EN.

AUTOMATIC SYSTEMS AMERICA INC., MAKES NO REPRESENTATIONS AS TO THE AUTHORITY HAVING JURISDICTION OF THE PLACEMENT AND LOCALISATIONS OF THE RISING GATES. ESTABLISHING THE POSITION AND LAYOUT OF THE DEVICE AND OF DETERMINING COMPLIANCE WITH THE BUILDING CODES AND OTHER CODES, LAWS AND REGULATIONS IS THE SOLE RESPONSABILITY OF THE PURCHASER. INSTALLATION MUST BE PERFORMED BY A QUALIFIED INSTALLER USING MANUFACTURER'S INSTRUCTIONS.

MATÉRIAU/MATERIAL

N/A

FABRICATION

N/A

TRAITEMENT/TREATMENT

N/A

FINI/FINISH

N/A

Nb./App.

-

POIDS/WEIGHT

- Lbs

SURFACE

- in2

LES INFORMATIONS CONTENUES SUR LES DESSINS DE ASA Inc. SONT CONFIDENTIELLES ET SONT LA PROPRIÉTÉ DE ASA Inc. TOUTES REPRODUCTIONS, DISTRIBUTIONS OU UTILISATIONS SONT INTERDITES SANS LA PERMISSION ÉCRITE DE ASA Inc.

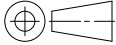
INFORMATION DISCLOSED HERE IS CONFIDENTIAL AND IS THE PROPERTY OF ASA Inc. ANY REPRODUCTION, DISTRIBUTION OR USE IS PROHIBITED WITHOUT A WRITTEN CONSENT BY ASA Inc.

FICHIER

FILENAME

BLG77-IN-03-EN.DWG

EBARBER & ENLEVER LES ARÊTES VIVES
BREAK ALL SHARP EDGES AND CORNERS



LES DIMENSIONS SONT EN
POUCES. DIMENSIONS
ARE IN INCHES

TOLERANCES
.XXXX ± .0005
.XXX ± .005
.XX ± .01
FRACT. ± 1/64
ANGLES ± 1/2 °

SAUF SI INDICUÉS
UNLESS OTHERWISE NOTED

SIMILAR PARTS

| REV. | DATE | MODIFICATIONS/CHANGES | PAR/BY |
|-----------|------------|--|---------|
| D | 2017/06/09 | NOTES & TITLE | OHL/SSA |
| C | 2008/01/21 | DISCLAIMER ADDED | PYM |
| B | 2008/01/11 | LENGHT OF FENCE CHANGED FROM 16' TO 16' 8" | PYM |
| REVISIONS | | | |



TITRE
TITLE

BLG77-H Right Opening of 16' X 10'
Dimensions and Safety Notice

| | | | | | |
|---------------------------|---------------------------------------|----------------------|--------------------|--------------------|------------|
| DESSINÉ PAR DRAWN BY | PYM | ÉCHELLE/SCALE N/A | DATE 2007/11/15 | FEUILLE/SHEET 1 | DE/OF 1 |
| VÉRIFIÉ PAR CHECKED BY | NO. DE DESSIN/DWG. NO. BLG77-IN-03-EN | | | REV. D | |