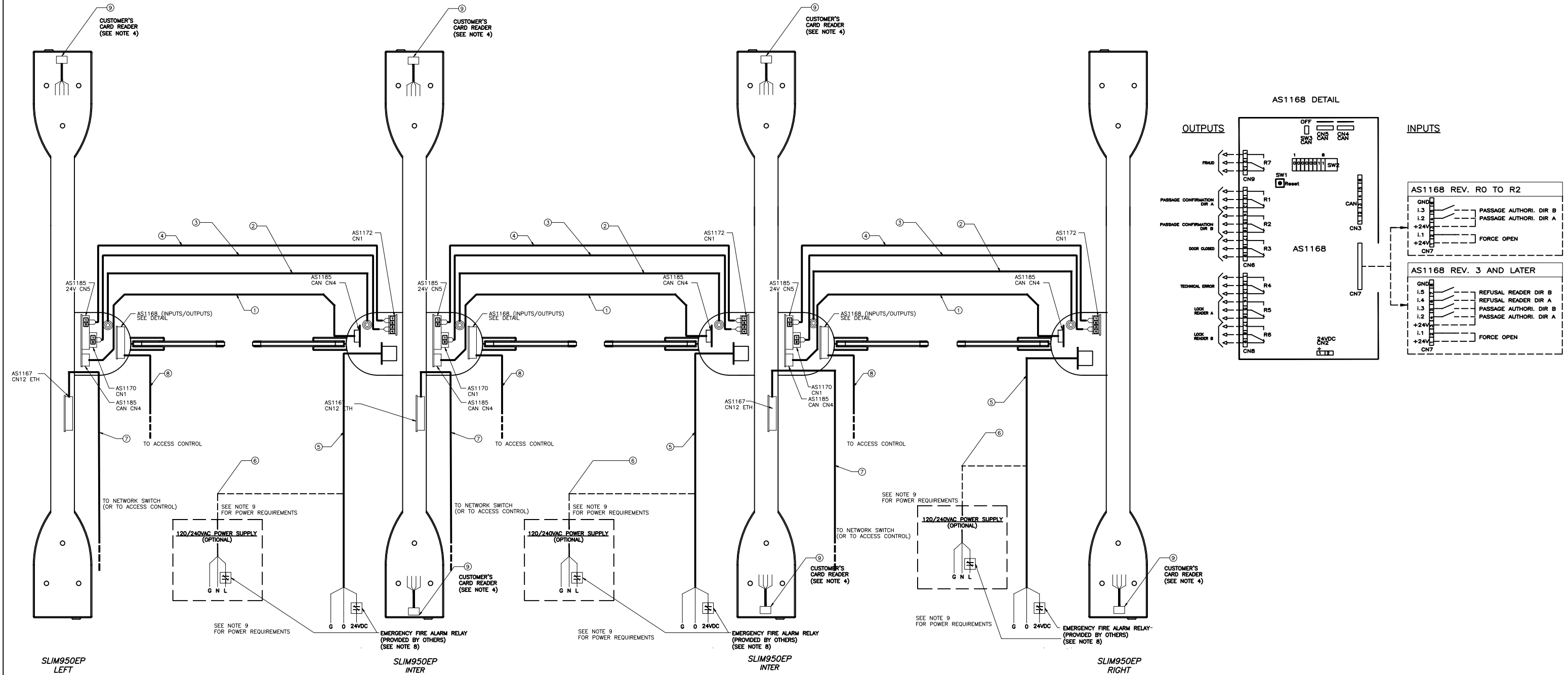


ELECTRICAL CONNECTIONS



#	DESCRIPTION	SUPPLIER
1	1/25" LOW VOLTAGE CABLE, 4 COND.(2 PHRS), 24 AWG, SHIELDED, 1/4" DIA. X 9.8FT (NOTE 1)	
2	1/10" GROUND CABLE, 1 COND., 14 AWG, 9/64" DIA. X 6.5FT (NOTE 1)	
3	1/14" LOW VOLTAGE CABLE, 2 COND., 18 AWG SHIELDED, 1/4" DIA. X 9.8FT (NOTE 1)	ASA
4	1/13" LOW VOLTAGE CABLE, 2 COND., 18 AWG SHIELDED, 1/4" DIA. X 9.8FT (NOTE 1)	ASA
5	POWER CABLE, 3 COND. 120A, MAX LENGTH : 100' (NOTE 1 & NOTE 2)	CUSTOMER
6	POWER CABLE, 3 COND. 120A, (IF 120V OPTION SELECTED) (NOTE 2)	CUSTOMER
7	ETHERNET CABLE, CAT 6	CUST/OPT
8	I/O CABLE (NOTE 8)	CUSTOMER
9	READER CABLE (DEPENDS ON SELECTED READER)	CUSTOMER

NOTE 1: IF THE INSTALLATION REQUIRES LONGER CABLES, PLEASE CONTACT AUTOMATIC SYSTEMS.
 NOTE 2: AS A REFERENCE ONLY. RESPECT ALL LOCAL STANDARDS AND LAWS.
 NOTE 4: CARD READER INSTALLED ON RIGHT SIDE OF UNITS IN RELATION TO PASSAGE DIRECTION.
 NOTE 5: ALL INPUTS ARE NORMALLY OPENED, EXCEPT FOR THE FORCE OPEN CONTACT.
 NOTE 6: THE NUMBER OF CONDUCTORS AND WIRE GAUGE IS DETERMINED BY THE CUSTOMER AND DEPENDS ON THE INPUTS AND OUTPUTS REQUIRED, REFER TO "AS1168 DETAIL" VIEW.
 NOTE 7: FOR DETAILED ELECTRICAL DIAGRAM REFER TO NAM-SLIM-EL-BI-01.
 NOTE 8: FOR NON FIRE EMERGENCIES, THE FORCE OPEN CONTACT ON AS1168 BOARD MAY BE USED TO HOLD OPEN THE LANE (INSTEAD OF CUTTING POWER), IT IS THE RESPONSIBILITY OF THE INTEGRATOR/CUSTOMER TO VERIFY IF A SOFTWARE OPENING RESPECTS LOCAL STANDARDS AND LAWS.
 NOTE 9: POWER REQUIREMENT: FOR 24VDC POWER SUPPLY: 15 A
 FOR 120VAC POWER SUPPLY: 6 A

AUTOMATIC SYSTEMS MAKES NO REPRESENTATION AS TO THE PROPER POSITIONING OF THE SECURITY ENTRANCE LANES AT THE INSTALLATION LOCATION. ESTABLISHING THE LAYOUT AND PLACEMENT OF THE UNIT(S) AND DETERMINING COMPLIANCE WITH THE APPLICABLE BUILDING CODES, OTHER CODES, LAWS AND REGULATIONS IS THE SOLE RESPONSIBILITY OF THE PURCHASER. INSTALLATION MUST BE PERFORMED BY A QUALIFIED INSTALLER FOLLOWING MANUFACTURER'S INSTRUCTIONS, OTHERWISE AUTOMATIC SYSTEMS' WARRANTIES MAY BE VOID.

MATÉRIAU/MATERIAL	FICHER FILENAME NAM-SLIM-EL-37.DWG		DIMENSIONS	FORMAT
FABRICATION	TRAITEMENT/TREATMENT			
Nb./App.	POIDS/WEIGHT	SURFACE	FINI/FINISH	
		IMPERIAL X/X ±1/32" X.X ±0.030" X.XX ±0.015" X.XXX ±0.005"		METRIC X ±1mm X.X ±0.5mm X.XX ±0.05mm
		ANGLES ± 1/2° SAUF SI INDICUÉS UNLESS OTHERWISE NOTED		

REV.	DATE	MODIFICATIONS/CHANGES	PAR/BY
-	-	-	-

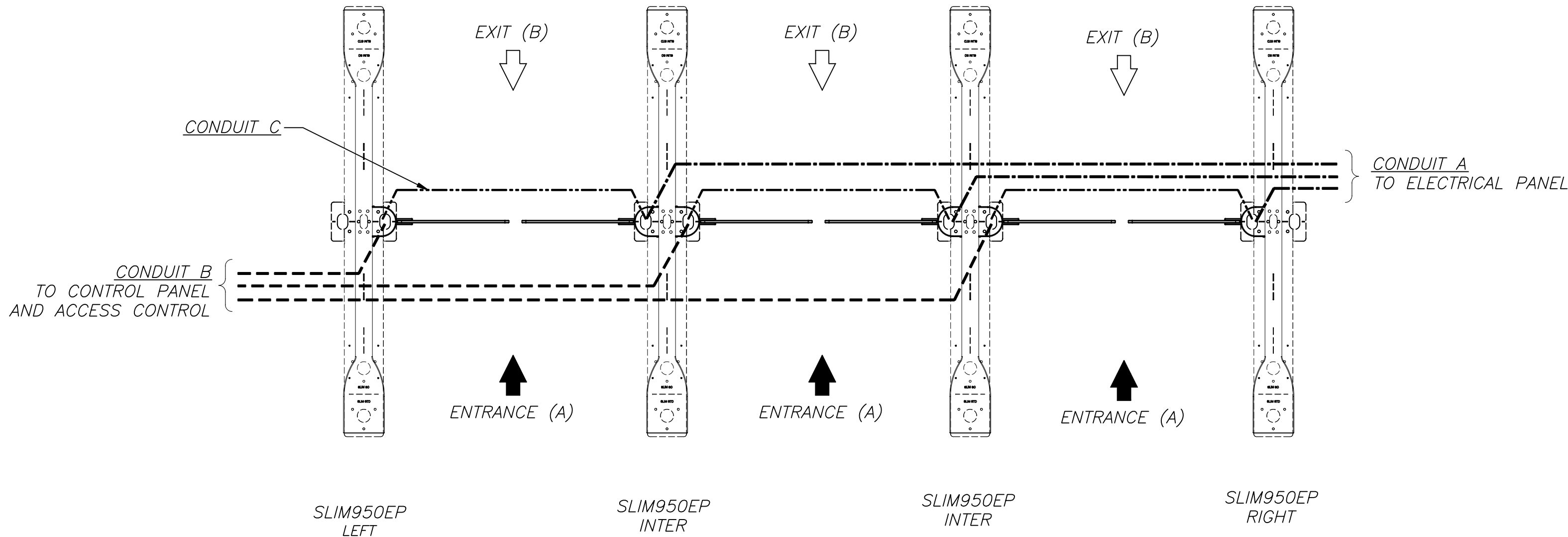
AUTOMATIC SYSTEMS
 AIR GROUP

TITRE	SLIMLANE 940/950EP 3 LANES
TITRE	GENERIC ELECTRICAL CONNECTIONS AND CONDUITS LAYOUT
DESSINÉ PAR	OHL
DRAWN BY	OHL
VERIFIÉ PAR	SOS
CHECKED BY	SOS

ECHELLE/SCALE	N/A
DATE	2015/12/10
FEUILLE/SHEET	1
DE/OF	3

No. DESSIN/DWG. No. NAM-SLIM-EL-37
 REV. A

CONDUITS LAYOUT



NOTES:

- 1- THE NUMBER OF UNITS AND LANES MAY VARY DEPENDING ON CUSTOMER REQUIREMENTS, REFER TO CUSTOMER SPECIFIC LAYOUT TO ADJUST THE NUMBER OF CONDUITS ACCORDINGLY.
- 2- ALL WIRING MUST MEET OR EXCEED STANDARDS AND CODES AND MUST BE INSTALLED BY A CERTIFIED TECHNICIAN.
- 3- 10' OF CABLE RUN MUST BE LEFT UNBURIED.
- 4- INSTALLATION OF A PULLING LINE BETWEEN EACH GATE IS RECOMMENDED.
- 5- UNITS MUST BE SECURED TO STRUCTURAL FLOOR WITH PROVIDED HARDWARE PRIOR TO USE
- 6- CONDUITS SHALL BE BURIED AT LEAST 5" BELOW THE FINISHED FLOOR SURFACE TO AVOID CONTACT WITH ANCHORS (2-3/4" LONG).

- 7- CONDUIT DETAILS:**
- CONDUIT A- USE : POWER CABLE (TO ELECTRICAL PANEL)
SIZE : PVC 3/4"
NOTE: SEPARATE POWER FEEDS ARE NECESSARY FOR EACH RIGHT AND INTERMEDIATE UNITS (CABLE SUPPLIED BY CUSTOMER).
 - CONDUIT B- USE : CONTROL PANEL AND ACCESS CONTROL (READERS, BIOMETRIC ETC...) CABLES.
SIZE : PVC 3/4" OR 1" MAX.
NOTE: CONDUIT TO EACH LEFT AND INTERMEDIATE UNITS. LOW VOLTAGE CABLES ONLY (CABLES SUPPLIED BY CUSTOMER, IF APPLICABLE)
 - CONDUIT C- USE : LOW VOLTAGE INTERCONNECTION CABLES.
SIZE : PVC 3/4"
NOTE: 1 CONDUIT PER LANE (CABLES SUPPLIED BY ASA).

CONDUIT A

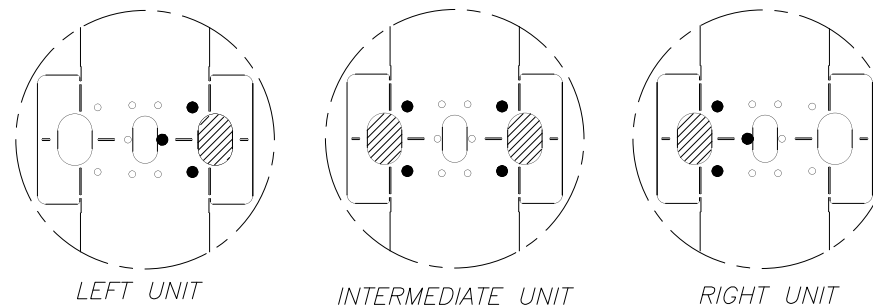
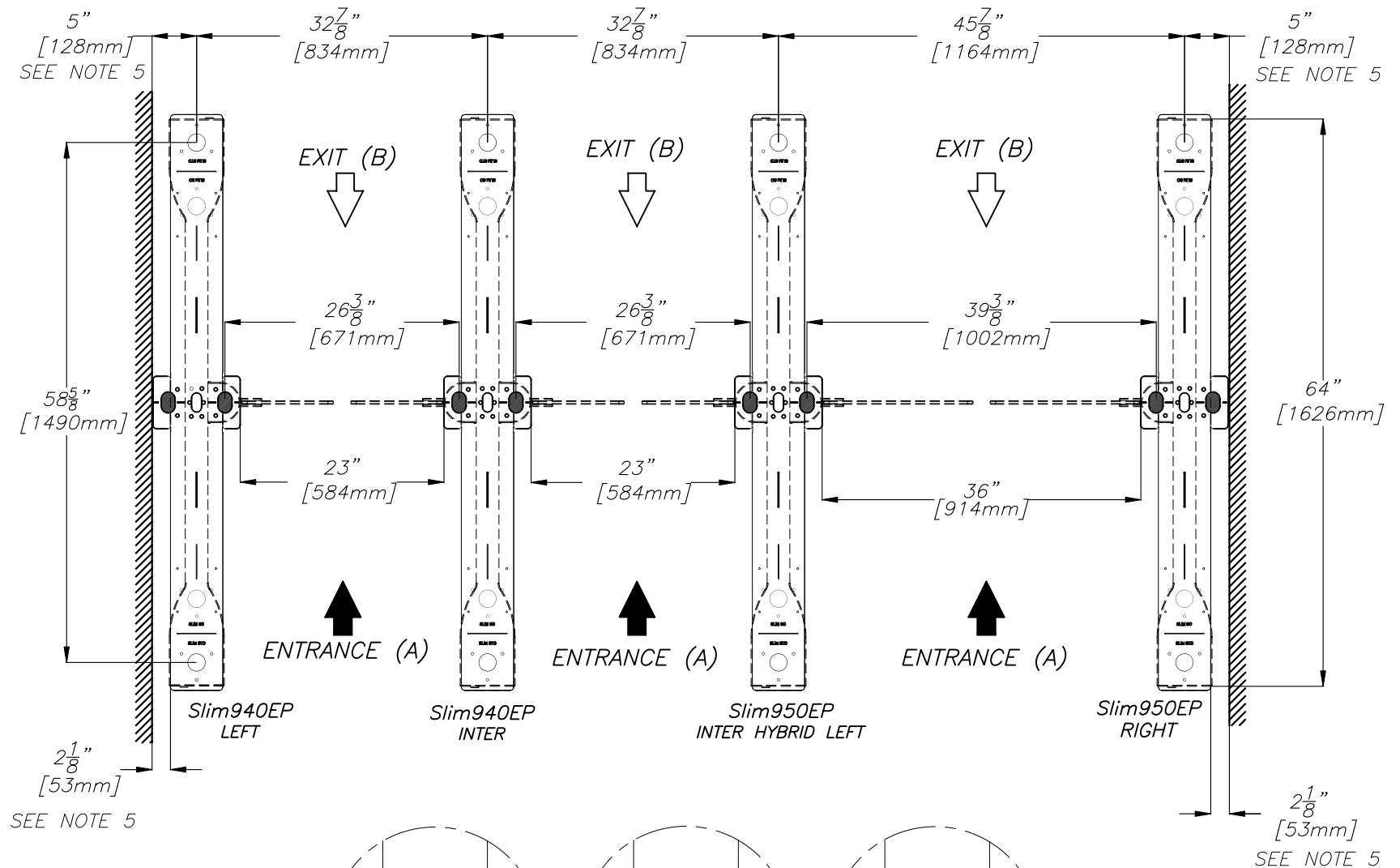
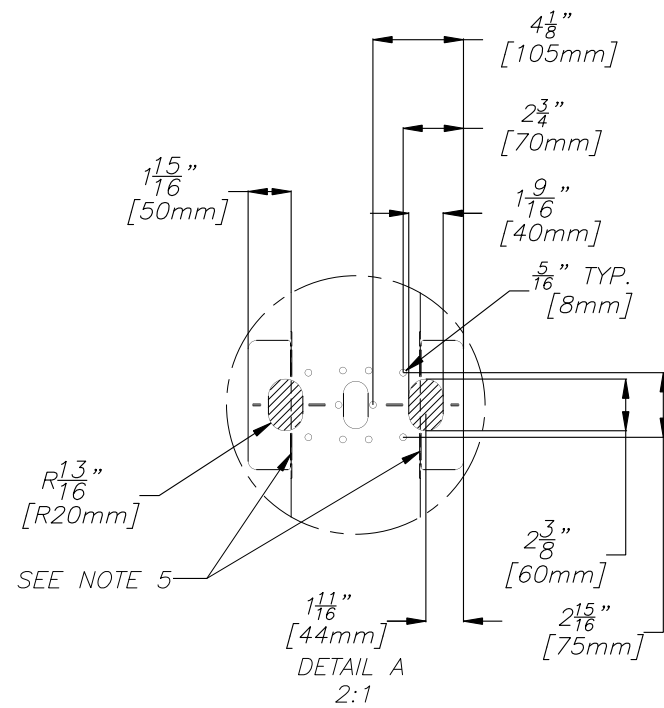
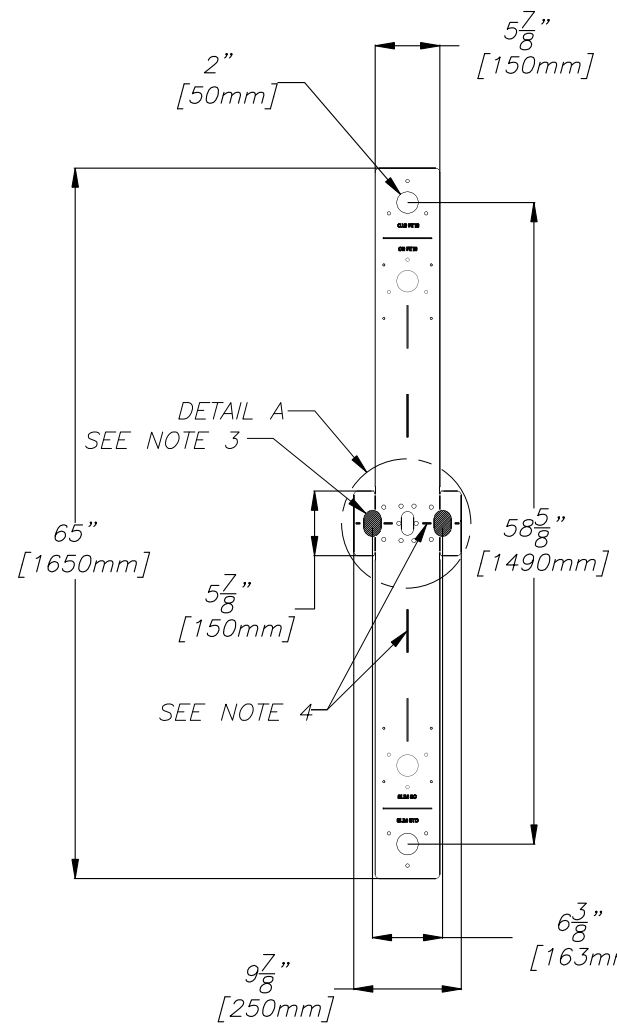
CONDUIT B

CONDUIT C

AUTOMATIC SYSTEMS MAKES NO REPRESENTATION AS TO THE PROPER POSITIONING OF THE SECURITY ENTRANCE LANES AT THE INSTALLATION LOCATION. ESTABLISHING THE LAYOUT AND PLACEMENT OF THE UNIT(S) AND DETERMINING COMPLIANCE WITH THE APPLICABLE BUILDING CODES, OTHER CODES, LAWS AND REGULATIONS IS THE SOLE RESPONSIBILITY OF THE PURCHASER. INSTALLATION MUST BE PERFORMED BY A QUALIFIED INSTALLER FOLLOWING MANUFACTURER'S INSTRUCTIONS, OTHERWISE AUTOMATIC SYSTEMS' WARRANTIES MAY BE VOID.

MATERIAU/MATERIAL		FICHER FILENAME		DIMENSIONS		FORMAT		REV.	DATE	MODIFICATIONS/CHANGES		PAR/BY
-		NAM-SLIM-EL-37.DWG		-		B						
FABRICATION		TRAITEMENT/TREATMENT		-		-						
-		EBARBER LES ARÊTES VIVES BREAK ALL SHARP EDGES		-		-				TITRE		
Nb./App.		POIDS/WEIGHT		SURFACE		FINI/FINISH		IMPERIAL		METRIC		
-		-		-		-		X/X ±1/32"		X ±1mm		
-		-		-		-		X.X ±0.030"		X.X ±0.5mm		
-		-		-		-		X.XX ±0.015"		X.XX ±0.05mm		
-		-		-		-		X.XXX ±0.005"		-		
-		-		-		-		ANGLES		± 1/2°		
-		-		-		-		SAUF SI INDIQUÉS UNLESS OTHERWISE NOTED		-		
<p>LES INFORMATIONS CONTENUES SUR LES DESSINS DE ASA Inc. SONT CONFIDENTIELLES ET SONT LA PROPRIÉTÉ DE ASA Inc. TOUTES REPRODUCTIONS, DISTRIBUTIONS OU UTILISATIONS SONT INTERDITES SANS LA PERMISSION ÉCRITE DE ASA Inc.</p> <p>INFORMATION DISCLOSED HERE IS CONFIDENTIAL AND IS THE PROPERTY OF ASA Inc., ANY REPRODUCTION, DISTRIBUTION OR USE IS PROHIBITED WITHOUT A WRITTEN CONSENT BY ASA Inc.</p>										TITRE		
										SLIMLANE 940/950EP 3 LANES		
										TITLE		
										GENERIC ELECTRICAL CONNECTIONS AND CONDUITS LAYOUT		
DESSINÉ PAR				ÉCHELLE/SCALE				DATE		FEUILLE/SHEET		DE/OF
DRAWN BY				N/A				2015/12/10		2		3
VÉRIFIÉ PAR				No. DESSIN/DWG. No.				REV.				
CHECKED BY				NAM-SLIM-EL-37				A				

SLIMLANE TEMPLATE POSITIONING LAYOUT



LOCATION OF ANCHORS ACCORDING TO UNIT TYPE

NOTES:

- 1- THE NUMBER OF UNITS AND LANES MAY VARY DEPENDING ON CUSTOMER REQUIREMENTS. REFER TO CUSTOMER SPECIFIC LAYOUT FOR FINAL POSITIONING OF TEMPLATES.
- 2- FIXED TO FLOOR WITH CHEMICAL ANCHORS, DRILL $\varnothing 1/2"$ X 2-3/4" DEEP. ANCHORS PROVIDED BY ASA, CHEMICAL ADHESIVE TO BE SUPPLIED BY CUSTOMER.
- 3- HATCHED AREAS SHOW CONDUIT ENTRY ZONES.
- 4- LINEAR CUTOUTS TO HELP ALIGN TEMPLATE ON CHALK LINE.
- 5- FOLD AND BREAK TEMPLATE WHERE INDICATED TO INSTALL UNIT CLOSER TO THE WALL.

AUTOMATIC SYSTEMS MAKES NO REPRESENTATION AS TO THE PROPER POSITIONING OF THE SECURITY ENTRANCE LANES AT THE INSTALLATION LOCATION. ESTABLISHING THE LAYOUT AND PLACEMENT OF THE UNIT(S) AND DETERMINING COMPLIANCE WITH THE APPLICABLE BUILDING CODES, OTHER CODES, LAWS AND REGULATIONS IS THE SOLE RESPONSIBILITY OF THE PURCHASER. INSTALLATION MUST BE PERFORMED BY A QUALIFIED INSTALLER FOLLOWING MANUFACTURER'S INSTRUCTIONS, OTHERWISE AUTOMATIC SYSTEMS' WARRANTIES MAY BE VOID.

MATÉRIAU/MATERIAL				FICHIER FILENAME NAM-SLIM-EL-37.DWG		DIMENSIONS	FORMAT	REV.	DATE	MODIFICATIONS/CHANGES	PAR/BY	
FABRICATION				TRAITEMENT/TREATMENT								
				EBARBER LES ARÊTES VIVES BREAK ALL SHARP EDGES		B						
Nb./App.		POIDS/WEIGHT		SURFACE		FINI/FINISH						
				LES INFORMATIONS CONTENUES SUR LES DESSINS DE ASA Inc. SONT CONFIDENTIELLES ET SONT LA PROPRIÉTÉ DE ASA Inc. TOUTES REPRODUCTIONS, DISTRIBUTIONS OU UTILISATIONS SONT INTERDITES SANS LA PERMISSION ÉCRITE DE ASA Inc.		IMPERIAL X/X ±1/32"		METRIC X ±1mm		TITRE SLIMLANE 940/950EP 3 LANES		
				INFORMATION DISCLOSED HERE IS CONFIDENTIAL AND IS THE PROPERTY OF ASA Inc., ANY REPRODUCTION, DISTRIBUTION OR USE IS PROHIBITED WITHOUT A WRITTEN CONSENT BY ASA Inc.		X.X ±0.030"		X.X ±0.5mm		TITRE GENERIC ELECTRICAL CONNECTIONS AND CONDUITS LAYOUT		
						X.XX ±0.015"		X.XX ±0.05mm		DESSINÉ PAR		
						X.XXX ±0.005"		ANGLES ± 1/2°		DRAWN BY OHL		
						SAUF SI INDIQUÉS UNLESS OTHERWISE NOTED				ÉCHELLE/SCALE		
										DATE 2015/12/10		
										FEUILLE/SHEET		
										DE/OF 3		
										VÉRIFIÉ PAR		
										No. DESSIN/DWG. No.		
										NAM-SLIM-EL-37		
										REV. A		
										CHECKED BY SOS		