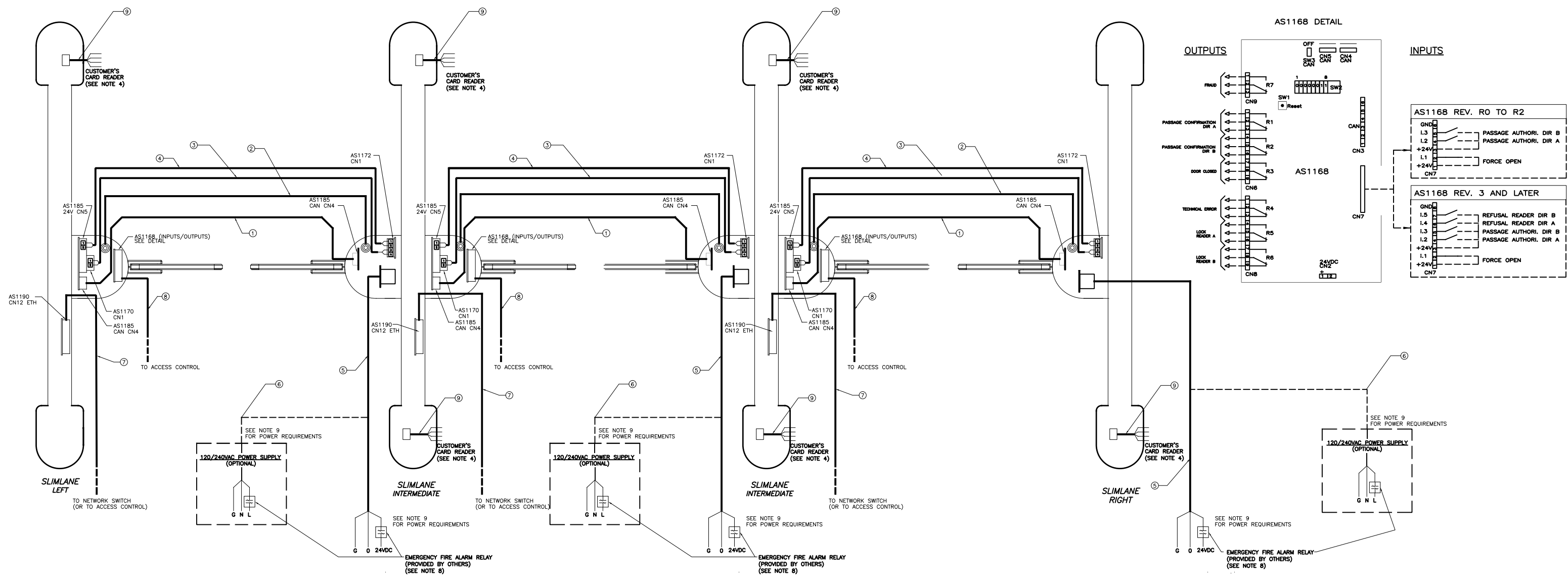


ELECTRICAL CONNECTIONS



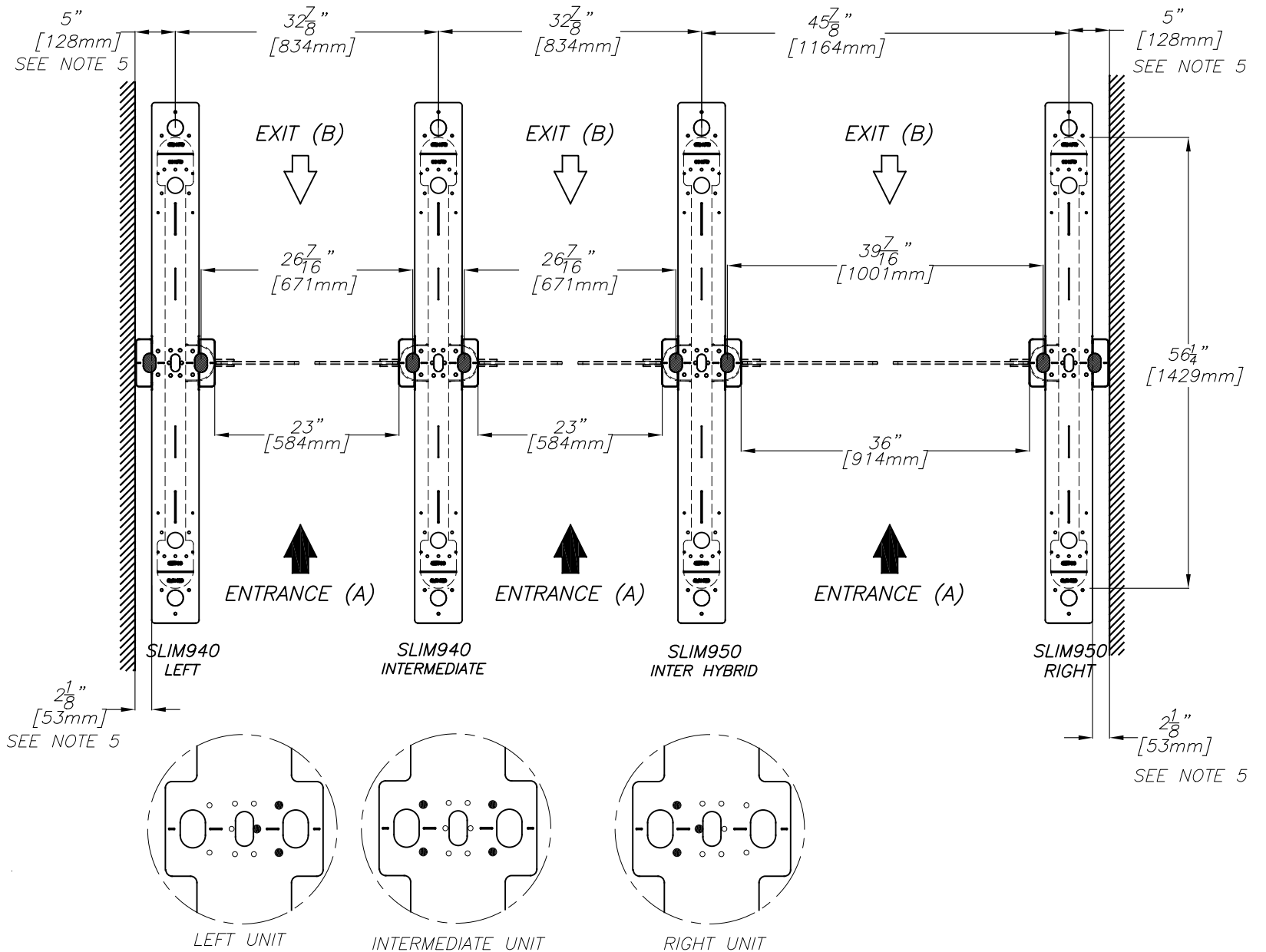
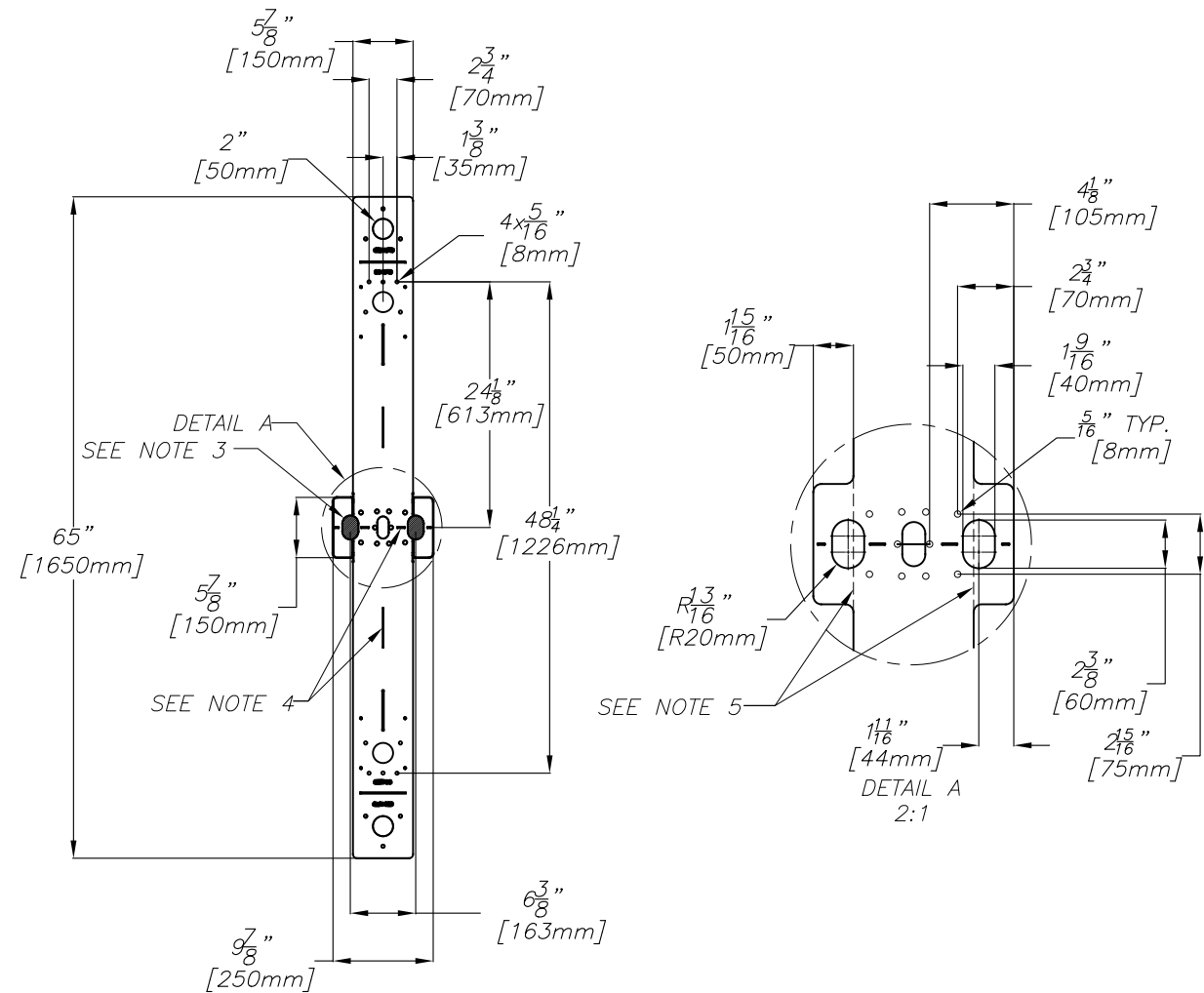
#	DESCRIPTION	SUPPLIER
1	"#25" LOW VOLTAGE CABLE, 4 COND.(2 PAIRS), 24 AWG, SHIELDED, 1/4"DIA. X 9.8FT (NOTE 1)	ASA
2	"#10" GROUND CABLE, 1 COND., 14 AWG, 9/64"DIA. X 6.5FT (NOTE 1)	ASA
3	"#14" LOW VOLTAGE CABLE, 2 COND., 18 AWG SHIELDED, 1/4" DIA. X 9.8FT (NOTE 1)	ASA
4	"#13" LOW VOLTAGE CABLE, 2 COND., 18 AWG SHIELDED, 1/4" DIA. X 9.8FT (NOTE 1)	ASA
5	POWER CABLE, 3 COND. 12GA. MAX LENGTH : 100' (NOTE 1 & NOTE 2)	CUSTOMER
6	POWER CABLE, 3 COND. 12GA. (IF 120V OPTION SELECTED) (NOTE 2)	CUSTOMER
7	ETHERNET CABLE, CAT 6	CUST/OPT
8	I/O CABLE (NOTE 6)	CUSTOMER
9	READER CABLE (DEPENDS ON SELECTED READER)	CUSTOMER

NOTE 1: IF THE INSTALLATION REQUIRES LONGER CABLES, PLEASE CONTACT AUTOMATIC SYSTEMS.
 NOTE 2: AS A REFERENCE ONLY. RESPECT ALL LOCAL STANDARDS AND LAWS.
 NOTE 4: CARD READER INSTALLED ON RIGHT SIDE OF UNITS IN RELATION TO PASSAGE DIRECTION.
 NOTE 5: ALL INPUTS ARE NORMALLY OPENED, EXCEPT FOR THE FORCE OPEN CONTACT.
 NOTE 6: THE NUMBER OF CONDUCTORS AND WIRE GAUGE IS DETERMINED BY THE CUSTOMER AND DEPENDS ON THE INPUTS AND OUTPUTS REQUIRED, REFER TO "AS1168 DETAIL" VIEW.
 NOTE 7: FOR DETAILED ELECTRICAL DIAGRAM REFER TO NAM-SLIM-EL-BI-01.
 NOTE 8: FOR NON FIRE EMERGENCIES, THE FORCE OPEN CONTACT ON AS1168 BOARD MAY BE USED TO HOLD OPEN THE LANE (INSTEAD OF CUTTING POWER), IT IS THE RESPONSIBILITY OF THE INTEGRATOR/CUSTOMER TO VERIFY IF A SOFTWARE OPENING RESPECTS LOCAL STANDARDS AND LAWS.
 NOTE 9: POWER REQUIREMENT: FOR 24VDC POWER SUPPLY: 15 A
 FOR 120VAC POWER SUPPLY: 6 A

AUTOMATIC SYSTEMS MAKES NO REPRESENTATION AS TO THE PROPER POSITIONING OF THE SECURITY ENTRANCE LANES AT THE INSTALLATION LOCATION. ESTABLISHING THE LAYOUT AND PLACEMENT OF THE UNIT(S) AND DETERMINING COMPLIANCE WITH THE APPLICABLE BUILDING CODES, OTHER CODES, LAWS AND REGULATIONS IS THE SOLE RESPONSIBILITY OF THE PURCHASER. INSTALLATION MUST BE PERFORMED BY A QUALIFIED INSTALLER FOLLOWING MANUFACTURER'S INSTRUCTIONS, OTHERWISE AUTOMATIC SYSTEMS' WARRANTIES MAY BE VOID.

MATÉRIAU/MATERIAL	FICHER FILENAME	NAM-SLIM-EL-15-EN.DWG		DIMENSIONS	FORMAT	B	2017/01/31	CHANGE TEMPLATE DESIGN	JPS/SOS
FABRICATION	TRAIEMENT/TREATMENT	EBARBER LES ARÊTES VIVES BREAK ALL SHARP EDGES						MODIFICATIONS/CHANGES	PAR/BY
Nb./App.	POIDS/WEIGHT	SURFACE	FINI/FINISH	IMPERIAL X/X ±1/32" X.X ±0.030" X.XX ±0.015" X.XXX ±0.005"	METRIC X ±1mm X.X ±0.5mm X.XX ±0.05mm				
LES INFORMATIONS CONTENUES SUR LES DESSINS DE ASA Inc. SONT CONFIDENTIELLES ET SONT LA PROPRIÉTÉ DE ASA Inc. TOUTES REPRODUCTIONS, DISTRIBUTIONS OU UTILISATIONS SONT INTERDITES SANS LA PERMISSION ÉCRITE DE ASA Inc.				ANGLES ± 1/2° SAUF SI INDICUÉS UNLESS OTHERWISE NOTED					
TITRE LAYOUT SLIMLANE 940/950 EPR 3 LANES						TITRE GENERIC ELECTRICAL CONNECTIONS AND CONDUITS LAYOUT			
DESSINÉ PAR JPS		ÉCHELLE/SCALE N/A		DATE 2014/07/22		FEUILLE/SHEET 1		DE/OFF 3	
VÉRIFIÉ PAR PWI		No. DESSIN/DWG. No.		NAM-SLIM-EL-15-EN		REV. B			

SLIMLANE TEMPLATE POSITIONING LAYOUT



LOCATION OF ANCHORS ACCORDING TO UNIT TYPE

NOTES:

- 1- THE NUMBER OF UNITS AND LANES MAY VARY DEPENDING ON CUSTOMER REQUIREMENTS. REFER TO CUSTOMER SPECIFIC LAYOUT FOR FINAL POSITIONING OF TEMPLATES.
- 2- UNITS FIXED TO FLOOR WITH CHEMICAL ANCHORS, DRILL $\phi 1/2"$ X 2-3/4" DEEP. ANCHORS PROVIDED BY ASA, CHEMICAL ADHESIVE TO BE SUPPLIED BY CUSTOMER.
- 3- HATCHED AREAS SHOW CONDUIT ENTRY ZONES.
- 4- LINEAR CUTOUTS TO HELP ALIGN TEMPLATE ON CHALK LINE.
- 5- TEMPLATE CAN BE CUT WHERE INDICATED TO INSTALL UNIT CLOSER TO THE WALL.

AUTOMATIC SYSTEMS MAKES NO REPRESENTATION AS TO THE PROPER POSITIONING OF THE SECURITY ENTRANCE LANES AT THE INSTALLATION LOCATION. ESTABLISHING THE LAYOUT AND PLACEMENT OF THE UNIT(S) AND DETERMINING COMPLIANCE WITH THE APPLICABLE BUILDING CODES, OTHER CODES, LAWS AND REGULATIONS IS THE SOLE RESPONSIBILITY OF THE PURCHASER. INSTALLATION MUST BE PERFORMED BY A QUALIFIED INSTALLER FOLLOWING MANUFACTURER'S INSTRUCTIONS, OTHERWISE AUTOMATIC SYSTEMS' WARRANTIES MAY BE VOID.

MATÉRIAU/MATERIAL	FICHER FILENAME	NAM-SLIM-EL-15-EN.DWG		
FABRICATION	TRAITEMENT/TREATMENT	EBARBER LES ARÊTES VIVES BREAK ALL SHARP EDGES		
Nb./App.	POIDS/WEIGHT	SURFACE	FINI/FINISH	IMPERIAL $x/x \pm 1/32"$ $x.x \pm 0.030"$ $x.xx \pm 0.015"$ $x.xxx \pm 0.005"$
LES INFORMATIONS CONTENUES SUR LES DESSINS DE ASA Inc. SONT CONFIDENTIELLES ET SONT LA PROPRIÉTÉ DE ASA Inc. TOUTES REPRODUCTIONS, DISTRIBUTIONS OU UTILISATIONS SONT INTERDITES SANS LA PERMISSION ÉCRITE DE ASA Inc.				METRIC $x \pm 1mm$ $x.x \pm 0.5mm$ $x.xx \pm 0.05mm$
INFORMATION DISCLOSED HERE IS CONFIDENTIAL AND IS THE PROPERTY OF ASA Inc., ANY REPRODUCTION, DISTRIBUTION OR USE IS PROHIBITED WITHOUT A WRITTEN CONSENT BY ASA Inc.				ANGLES $\pm 1/2^\circ$ SAUF SI INDICUÉS UNLESS OTHERWISE NOTED

DIMENSIONS	FORMAT	REV.	DATE	MODIFICATIONS/CHANGES	PAR/BY
-	B				
TITRE		SLIMLANE 940/950 EPR			
TITRE		GENERIC ELECTRICAL CONNECTIONS AND CONDUITS LAYOUT			
DESSINÉ PAR	ECHELLE/SCALE	DATE	FEUILLE/SHEET	DE/OF	
DRAWN BY	JPS	N/A	2014/07/22	3	3
VÉRIFIÉ PAR	No. DESSIN/DWG. No.	NAM-SLIM-EL-15-EN		REV. B	
CHECKED BY	PWI				