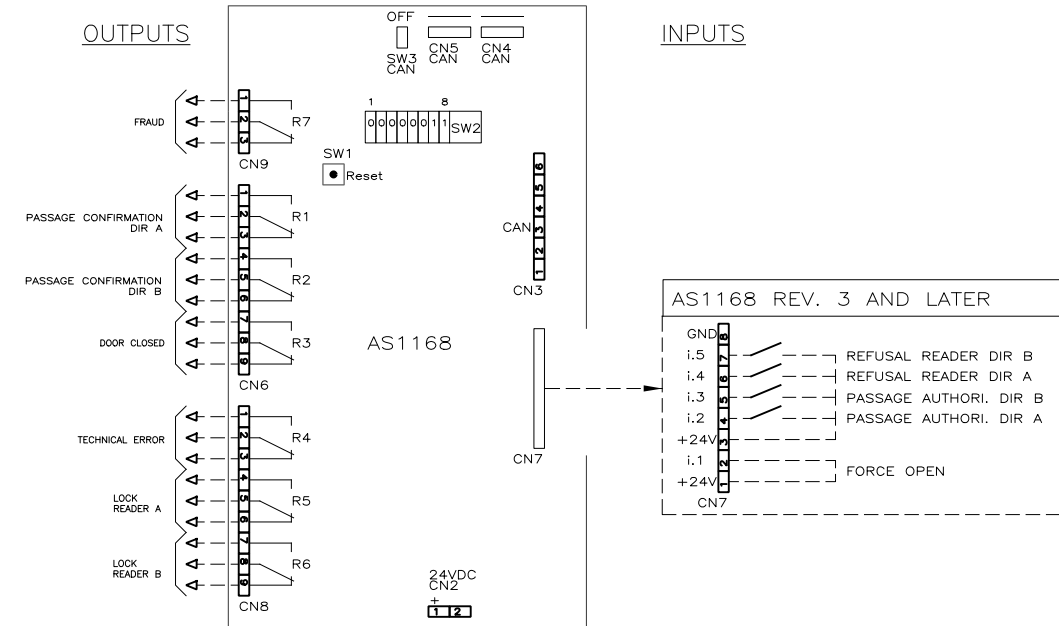


AS1168 DETAIL



#	DESCRIPTION	SUPPLIER
1	"W25" LOW VOLTAGE CABLE, 4 COND.(2 PAIRS), 24 AWG, SHIELDED, 1/4"DIA. X 9.8FT (NOTE 1)	ASA
2	"W10" GROUND CABLE, 1 COND., 14 AWG, 9/64"DIA. X 6.5FT (NOTE 1)	ASA
3	"W14" LOW VOLTAGE CABLE, 2 COND., 18 AWG SHIELDED, 1/4" DIA. X 9.8FT (NOTE 1)	ASA
4	"W13" LOW VOLTAGE CABLE, 2 COND., 18 AWG SHIELDED, 1/4" DIA. X 9.8FT (NOTE 1)	ASA
5	POWER CABLE, 3 COND. 12GA, MAX LENGTH : 100' (NOTE 1 & NOTE 2)	CUSTOMER
6	POWER CABLE, 3 COND. 12GA, (IF 120V OPTION SELECTED) (NOTE 2)	CUSTOMER
7	ETHERNET CABLE, CAT 6	CUST/OPT
8	I/O CABLE (NOTE 6)	CUSTOMER
9	READER CABLE (DEPENDS ON SELECTED READER)	CUSTOMER

NOTE 1: IF THE INSTALLATION REQUIRES LONGER CABLES, PLEASE CONTACT AUTOMATIC SYSTEMS.

NOTE 2: AS A REFERENCE ONLY. RESPECT ALL LOCAL STANDARDS AND LAWS.

NOTE 4: CARD READER INSTALLED ON RIGHT SIDE OF UNITS IN RELATION TO PASSAGE DIRECTION.

NOTE 5: ALL INPUTS ARE NORMALLY OPENED, EXCEPT FOR THE FORCE OPEN CONTACT.

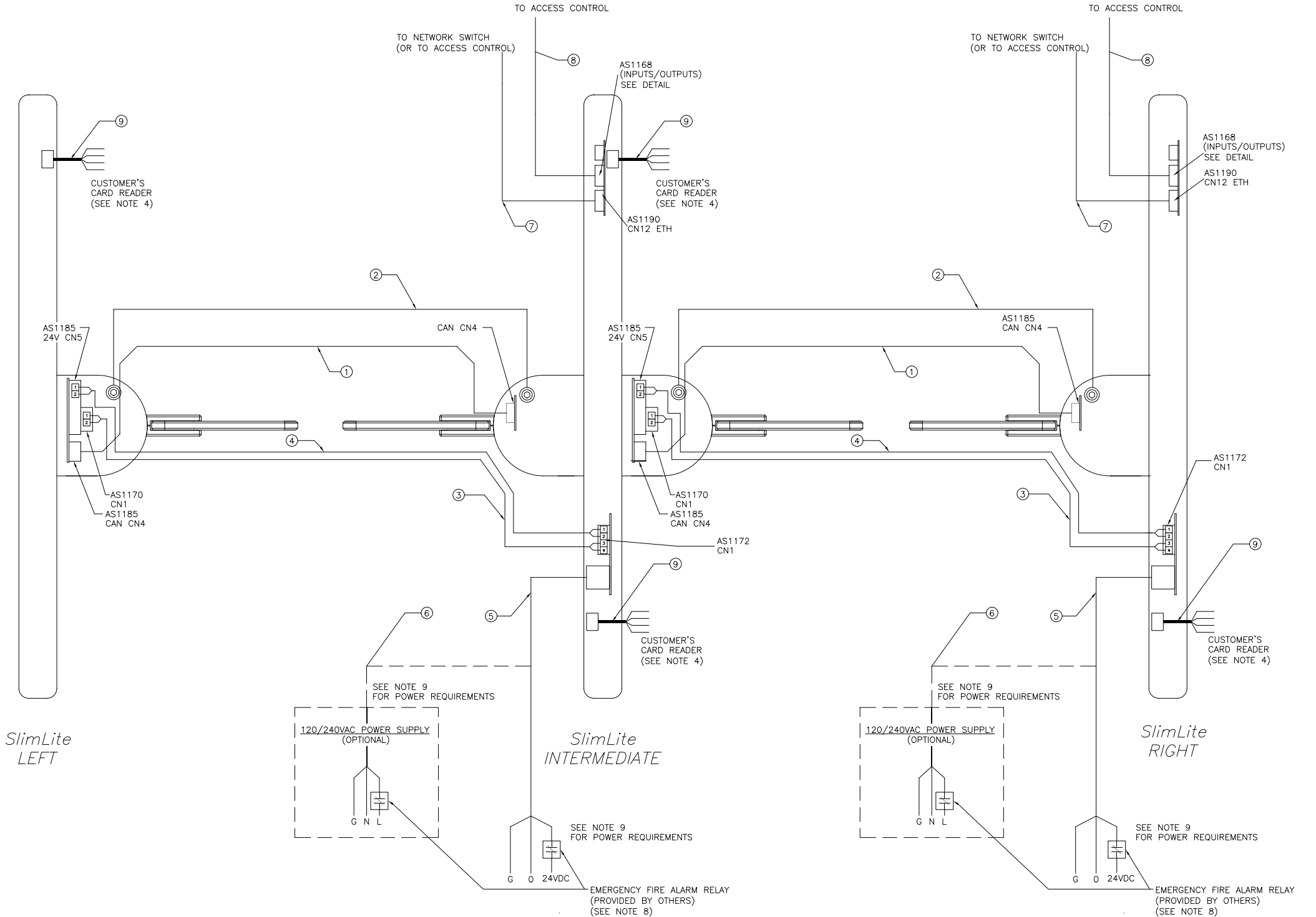
NOTE 6: THE NUMBER OF CONDUCTORS AND WIRE GAUGE IS DETERMINED BY THE CUSTOMER AND DEPENDS ON THE INPUTS AND OUTPUTS REQUIRED, REFER TO "AS1168 DETAIL" VIEW.

NOTE 7: FOR DETAILED ELECTRICAL DIAGRAM REFER TO "NAM-SLIMLT-EL-01-EN".



NOTE 8: FOR NON FIRE EMERGENCIES, THE FORCE OPEN CONTACT ON AS1168 BOARD MAY BE USED TO HOLD OPEN THE LANE (INSTEAD OF CUTTING POWER). IT IS THE RESPONSIBILITY OF THE INTEGRATOR/CUSTOMER TO VERIFY IF A SOFTWARE OPENING RESPECTS LOCAL STANDARDS AND LAWS.

NOTE 9: POWER REQUIREMENT: FOR 24VDC POWER SUPPLY: 15 A  
FOR 120VAC POWER SUPPLY: 6 A

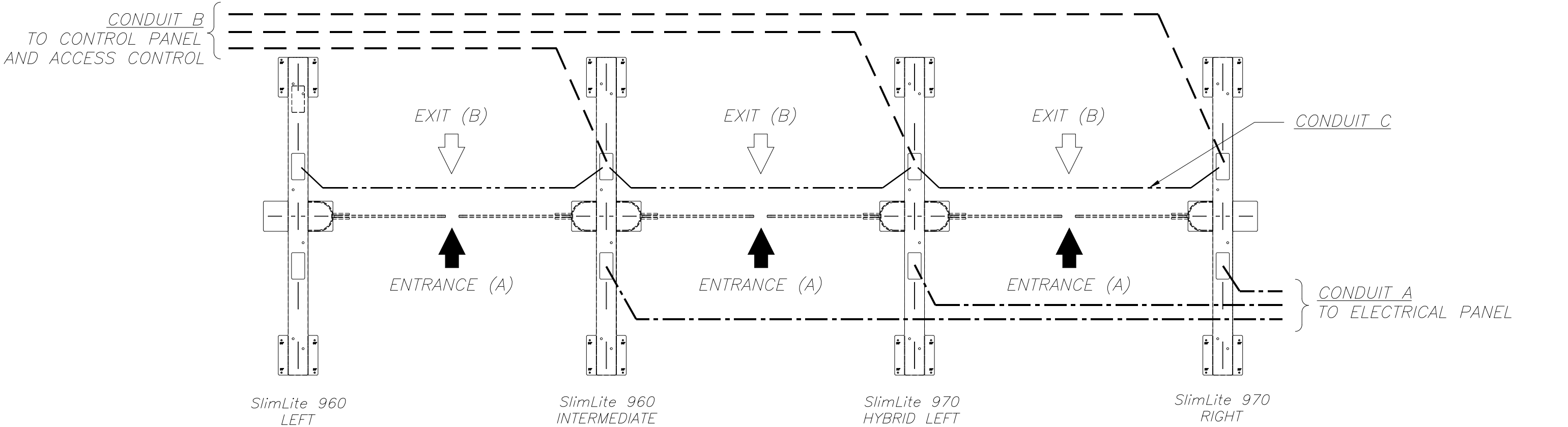
NOTE 10: FINAL DESIGN MAY VARY.



AUTOMATIC SYSTEMS MAKES NO REPRESENTATION AS TO THE PROPER POSITIONING OF THE SECURITY ENTRANCE LANES AT THE INSTALLATION LOCATION. ESTABLISHING THE LAYOUT AND PLACEMENT OF THE UNIT(S) AND DETERMINING COMPLIANCE WITH THE APPLICABLE BUILDING CODES, OTHER CODES, LAWS AND REGULATIONS IS THE SOLE RESPONSIBILITY OF THE PURCHASER. INSTALLATION MUST BE PERFORMED BY A QUALIFIED INSTALLER FOLLOWING MANUFACTURER'S INSTRUCTIONS, OTHERWISE AUTOMATIC SYSTEMS' WARRANTIES MAY BE VOID.

MATERIAU/MATERIAL		FICHIER FILENAME		NAM-SLIMLT-EL-02-EN.DWG			DIMENSIONS	FORMAT							
FABRICATION		TRAITEMENT/TREATMENT		EBARBER LES ARÊTES VIVES BREAK ALL SHARP EDGES			B								
Nb./App.	POIDS/WEIGHT	SURFACE		FINI/FINISH		IMPERIAL X/X ±1/32" X.X ±0.030" X.XX±0.015" X.XXX ±0.005"	METRIC X ±1mm X.X ±0.5mm X.XX±0.05mm	TITRE SLIMLITE 960 – 970							
LES INFORMATIONS CONTENUES SUR LES DESSINS DE ASA Inc. SONT CONFIDENTIELLES ET SONT LA PROPRIÉTÉ DE ASA Inc. TOUTES REPRODUCTIONS, DISTRIBUTIONS OU UTILISATIONS SONT INTERDITES SANS LA PERMISSION ÉCRITE DE ASA Inc.						TITRE GENERIC ELECTRICAL CONNECTIONS AND CONDUITS LAYOUT									
						DESSINÉ PAR		ÉCHELLE/SCALE		DATE		FEUILLE/SHEET		DE/OF	
						DRAWN BY OHL		N/A		2019/08/08		1		3	
INFORMATION DISCLOSED HERE IS CONFIDENTIAL AND IS THE PROPERTY OF ASA Inc., ANY REPRODUCTION, DISTRIBUTION OR USE IS PROHIBITED WITHOUT A WRITTEN CONSENT BY ASA Inc.						ANGLES ± 1/2 °		No. DESSIN/DWG. No.				REV.			
						SAUF SI INDICUÉS UNLESS OTHERWISE NOTED		NAM-SLIMLT-EL-02-EN				A			

CONDUITS LAYOUT



NOTES:

- 1- THE NUMBER OF UNITS AND LANES MAY VARY DEPENDING ON CUSTOMER REQUIREMENTS, REFER TO CUSTOMER SPECIFIC LAYOUT TO ADJUST THE NUMBER OF CONDUITS ACCORDINGLY.

2- ALL WIRING MUST MEET OR EXCEED STANDARDS AND CODES AND MUST BE INSTALLED BY A CERTIFIED TECHNICIAN.

3- 10' OF CABLE RUN MUST BE LEFT UNBURIED.

4- INSTALLATION OF A PULLING LINE BETWEEN EACH GATE IS RECOMMENDED.

5- UNITS MUST BE SECURED TO STRUCTURAL FLOOR WITH PROVIDED HARDWARE PRIOR TO USE

6- CONDUITS SHALL BE BURIED AT LEAST 5" BELOW THE FINISHED FLOOR SURFACE TO AVOID CONTACT WITH ANCHORS (2-3/4" LONG).

7- FINAL DESIGN MAY VARY.
- 7- CONDUIT DETAILS:

CONDUIT A- USE : POWER CABLE (TO ELECTRICAL PANEL)  
SIZE : PVC 3/4"  
NOTE: SEPARATE POWER FEEDS ARE NECESSARY FOR EACH RIGHT AND INTERMEDIATE UNITS (CABLE SUPPLIED BY CUSTOMER).

CONDUIT B- USE : CONTROL PANEL AND ACCESS CONTROL (READERS, BIOMETRIC ETC...) CABLES.  
SIZE : PVC 3/4" OR 1" MAX.  
NOTE: CONDUIT TO EACH LEFT AND INTERMEDIATE UNITS.  
LOW VOLTAGE CABLES ONLY (CABLES SUPPLIED BY CUSTOMER, IF APPLICABLE)

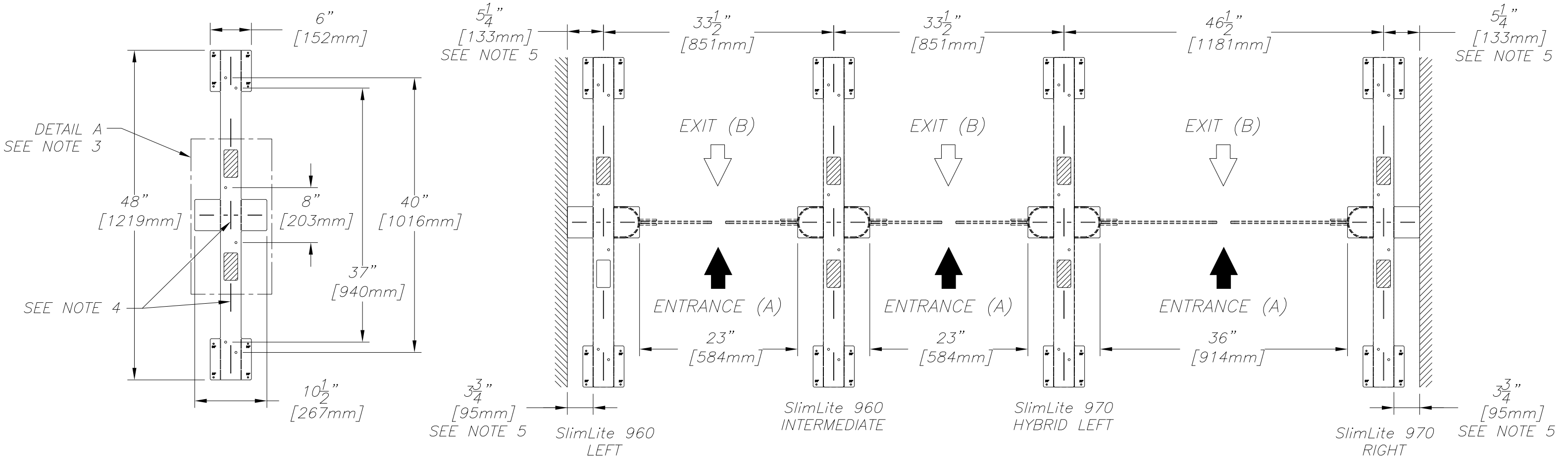
CONDUIT C- USE: LOW VOLTAGE INTERCONNECTION CABLES.  
SIZE : PVC 3/4"  
NOTE: 1 CONDUIT PER LANE (CABLES SUPPLIED BY ASA).

CONDUIT A    - - - - -  
CONDUIT B    - - - - -  
CONDUIT C    - - - - -

AUTOMATIC SYSTEMS MAKES NO REPRESENTATION AS TO THE PROPER POSITIONING OF THE SECURITY ENTRANCE LANES AT THE INSTALLATION LOCATION. ESTABLISHING THE LAYOUT AND PLACEMENT OF THE UNIT(S) AND DETERMINING COMPLIANCE WITH THE APPLICABLE BUILDING CODES, OTHER CODES, LAWS AND REGULATIONS IS THE SOLE RESPONSIBILITY OF THE PURCHASER. INSTALLATION MUST BE PERFORMED BY A QUALIFIED INSTALLER FOLLOWING MANUFACTURER'S INSTRUCTIONS, OTHERWISE AUTOMATIC SYSTEMS' WARRANTIES MAY BE VOID.

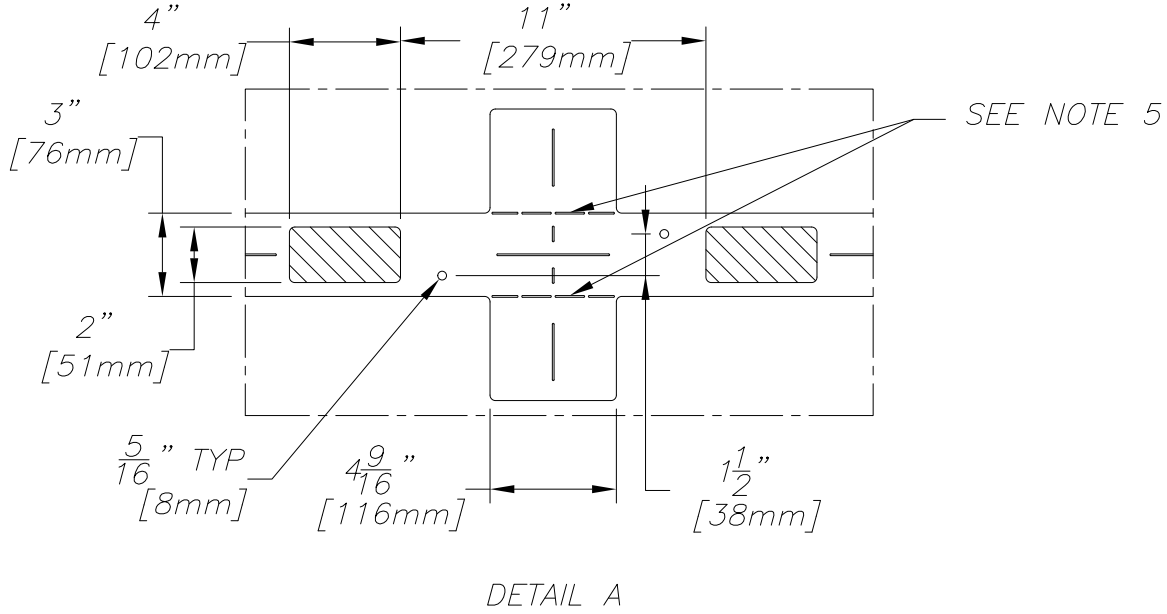
MATÉRIAU/MATERIAL		FICHIER FILENAME		NAM-SLIMLT-EL-02-EN.DWG			DIMENSIONS	FORMAT										
FABRICATION		TRAITEMENT/TREATMENT		EBARBER LES ARÊTES VIVES BREAK ALL SHARP EDGES				B										
Nb./App.	POIDS/WEIGHT	SURFACE	FINI/FINISH		IMPERIAL X/X ±1/32" X.X ±0.030" X.XX±0.015" X.XXX±0.005"	METRIC X ±1mm X.X ±0.5mm X.XX±0.05mm X.XXX±0.005"	TITRE SLIMLITE 960 - 970 TITLE GENERIC ELECTRICAL CONNECTIONS AND CONDUITS LAYOUT											
LES INFORMATIONS CONTENUES SUR LES DESSINS DE ASA Inc. SONT CONFIDENTIELLES ET SONT LA PROPRIÉTÉ DE ASA Inc. TOUTES REPRODUCTIONS, DISTRIBUTIONS OU UTILISATIONS SONT INTERDITES SANS LA PERMISSION ÉCRITE DE ASA Inc.  INFORMATION DISCLOSED HERE IS CONFIDENTIAL AND IS THE PROPERTY OF ASA Inc., ANY REPRODUCTION, DISTRIBUTION OR USE IS PROHIBITED WITHOUT A WRITTEN CONSENT BY ASA Inc.					ANGLES ± 1/2 °  SAUF SI INDIQUEES UNLESS OTHERWISE NOTED		DESSINÉ PAR DRAWN BY		OHL		ÉCHELLE/SCALE N/A		DATE 2019/08/08		FEUILLE/SHEET 2		DE/OF 3	
							VÉRIFIÉ PAR CHECKED BY		VBO		No. DESSIN/DWG. No. NAM-SLIMLT-EL-02-EN		REV. A					

TEMPLATE POSITIONING LAYOUT



NOTES:

- 1- THE NUMBER OF UNITS AND LANES MAY VARY DEPENDING ON CUSTOMER REQUIREMENTS. REFER TO CUSTOMER SPECIFIC LAYOUT FOR FINAL POSITIONING OF TEMPLATES.
- 2- FIXED TO FLOOR WITH CHEMICAL ANCHORS, DRILL  $\varnothing 1/2"$  X 2-3/4" DEEP. ANCHORS PROVIDED BY ASA, CHEMICAL ADHESIVE TO BE SUPPLIED BY CUSTOMER.
- 3- HATCHED AREAS SHOW CONDUIT ENTRY ZONES.
- 4- LINEAR CUTOUTS TO HELP ALIGN TEMPLATE ON CHALK LINE.
- 5- FOLD AND BREAK TEMPLATE WHERE INDICATED TO INSTALL UNIT CLOSER TO THE WALL.



AUTOMATIC SYSTEMS MAKES NO REPRESENTATION AS TO THE PROPER POSITIONING OF THE SECURITY ENTRANCE LANES AT THE INSTALLATION LOCATION. ESTABLISHING THE LAYOUT AND PLACEMENT OF THE UNIT(S) AND DETERMINING COMPLIANCE WITH THE APPLICABLE BUILDING CODES, OTHER CODES, LAWS AND REGULATIONS IS THE SOLE RESPONSIBILITY OF THE PURCHASER. INSTALLATION MUST BE PERFORMED BY A QUALIFIED INSTALLER FOLLOWING MANUFACTURER'S INSTRUCTIONS, OTHERWISE AUTOMATIC SYSTEMS' WARRANTIES MAY BE VOID.

MATERIAU/MATERIAL		FICHIER FILENAME		NAM-SLIMLT-EL-02-EN.DWG			DIMENSIONS	FORMAT				
FABRICATION		TRAITEMENT/TREATMENT		EBARBER LES ARÊTES VIVES BREAK ALL SHARP EDGES				B				
Nb./App.	POIDS/WEIGHT	SURFACE		FINI/FINISH		IMPERIAL X/X ±1/32" X.X ±0.030" X.XX±0.015" X.XXX±0.005"	METRIC X ±1mm X.X ±0.5mm X.XX±0.05mm X.XXX ±0.005"	TITRE SLIMLITE 960 – 970				
LES INFORMATIONS CONTENUES SUR LES DESSINS DE ASA Inc. SONT CONFIDENTIELLES ET SONT LA PROPRIÉTÉ DE ASA Inc. TOUTES REPRODUCTIONS, DISTRIBUTIONS OU UTILISATIONS SONT INTERDITES SANS LA PERMISSION ÉCRITE DE ASA Inc.						ANGLES ± 1/2 °  SAUF SI INDiquÉS UNLESS OTHERWISE NOTED		TITLE GENERIC ELECTRICAL CONNECTIONS AND CONDUITS LAYOUT				
INFORMATION DISCLOSED HERE IS CONFIDENTIAL AND IS THE PROPERTY OF ASA Inc., ANY REPRODUCTION, DISTRIBUTION OR USE IS PROHIBITED WITHOUT A WRITTEN CONSENT BY ASA Inc.								DESSINÉ PAR	ÉCHELLE/SCALE	DATE	FEUILLE/SHEET	DE/OF
								DRAWN BY OHL	N/A	2019/08/08	3	3
								VÉRIFIÉ PAR	No. DESSIN/DWG. No.	REV.		
								CHECKED BY VBO	NAM-SLIMLT-EL-02-EN	A		