

Safety notice

Barriers must be inspected frequently to identify and repair worn, corroded or cracked parts. This is especially important when the barrier is frequently required to reopen before the closing cycle is completed.

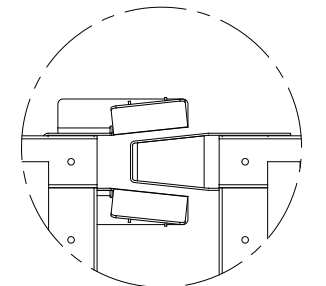
If the barrier is damaged or hit, it must be inspected by trained personnel able to identify damages including cracks.

The barrier and the fence must be cleaned of all ice accumulation or of snow to avoid the load increase.

No object (light, sign, etc.) must be added to the barrier.

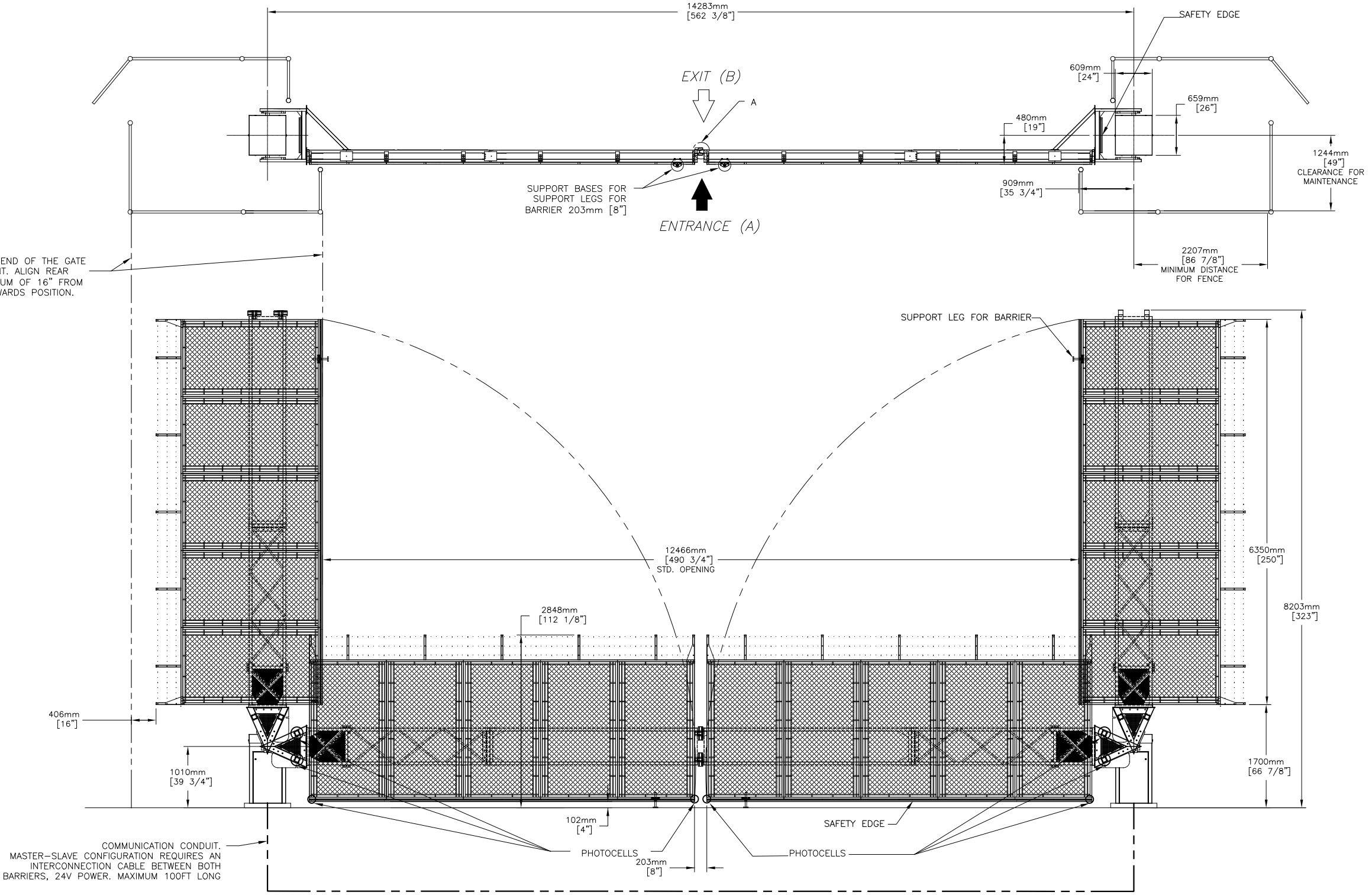
The fence must not be modified without authorization of Automatic Systems America Inc.

The barrier must be put out of service if cracks appear on any part, including the cement base or if the safety of the people is compromised.



DETAIL "A"
INTERLOCK OPTION FOR MASTER/SLAVE

ALIGN PERIMETER FENCE WITH THE END OF THE GATE IN THE UPWARDS POSITION IN FRONT. ALIGN REAR PERIMETER OF FENCE WITH A MINIMUM OF 16" FROM THE END OF THE GATE IN THE UPWARDS POSITION.



COMMUNICATION CONDUIT. MASTER-SLAVE CONFIGURATION REQUIRES AN INTERCONNECTION CABLE BETWEEN BOTH BARRIERS, 24V POWER. MAXIMUM 100FT LONG

- 1- AUTOMATIC SYSTEMS RECOMMENDS THAT THE CONCRETE BASE FOR THE BARRIER BE FABRICATED ACCORDING TO DRAWING "1164-2003-2004_TYPICAL BLG77 CONCRETE BASE". HOWEVER IT IS THE CUSTOMER'S RESPONSIBILITY TO ENSURE THAT THE INSTALLATION CONFORMS TO ALL LOCAL BUILDING CODES.
- 2- FOR CONDUIT LAYOUT REFER TO NAM-BLG77-CONDUITS-IN-EN.
- 3- FOR DETAIL DRAWINGS, REFER NAM-BLG77-IN-44-EN AND NAM-BLG77-IN-45-EN

AUTOMATIC SYSTEMS MAKES NO REPRESENTATION AS TO THE PROPER POSITIONING OF THE SECURITY ENTRANCE LANES AT THE INSTALLATION LOCATION. ESTABLISHING THE LAYOUT AND PLACEMENT OF THE UNIT(S) AND DETERMINING COMPLIANCE WITH THE APPLICABLE BUILDING CODES, OTHER CODES, LAWS AND REGULATIONS IS THE SOLE RESPONSIBILITY OF THE PURCHASER. INSTALLATION MUST BE PERFORMED BY A QUALIFIED INSTALLER FOLLOWING MANUFACTURER'S INSTRUCTIONS, OTHERWISE AUTOMATIC SYSTEMS' WARRANTIES MAY BE VOID.

REV	DATE	MODIFICATIONS/CHANGES	PAR/BY
-	-	-	-
REVISIONS			

MATERIAU/MATERIAL		
TRAITEMENT/TREATMENT		
FINI/FINISH		
NB./App.	POIDS/WEIGHT	SURFACE

LES INFORMATIONS CONTENUES SUR LES DESSINS DE ASA Inc. SONT CONFIDENTIELLES ET SONT LA PROPRIÉTÉ DE ASA Inc., TOUTES REPRODUCTIONS, DISTRIBUTIONS OU UTILISATIONS SONT INTERDITES SANS LA PERMISSION DE ASA Inc.

INFORMATION DISCLOSED HERE IS CONFIDENTIAL AND IS THE PROPERTY OF ASA Inc., ANY REPRODUCTION, DISTRIBUTION OR USE IS PROHIBITED WITHOUT A WRITTEN CONSENT BY ASA Inc.

LES DIMENSIONS SONT EN POUÇES / DIMENSIONS ARE IN INCHES	
TOLERANCES	
.XXX	± .005
.XX	± .010
.X	± .015
FRAC.	± 1/32
ANGLES	± 1/2°
SAUF SI INDIQUÉS UNLESS OTHERWISE NOTED	

EBARBER & ENLEVER LES ARÊTES VIVES. DIM SELON ASME Y14.5 1994. NE PAS MESURER SUR LE DESSIN

BREAK ALL SHARP EDGES AND CORNERS. ALL DIM PER ASME Y14.5 1994. DO NOT SCALE DRAWING

FICHER / FILENAME
NAM-BLG77-IN-46-EN-A-BLG77HLMS8x20.dwg

TITRE INSTALLATION BLG77HL 6M MASTER/SLAVE DIMENSIONS AND SAFETY NOTICE		ECHELLE/SCALE N/A	FORMAT/SIZE B	DATE 2020/03/03	FEUILLE/SHEET 1	DE/OF 1
DESSINÉ PAR DRAWN BY ZGR	VÉRIFIÉ PAR CHECKED BY SSA	NO. DE DESSIN/DWG. NO. NAM-BLG77-IN-46-EN		REV A		