

Pedestrian

Products portfolio



AUTOMATIC
SYSTEMS

Access controlled...
Future secured

//SlimLane

SWING DOOR BARRIER OPTICAL TURNSTILES

With innovative designs, SlimLane swing barrier Security Entrance Lanes combine high throughput with best in class reliability contained within a minimal footprint.



- ▲ Modern and elegant design with minimal footprint
- ▲ Customization to suit any architectural style
- ▲ UL 2593 listed to ensure user safety
- ▲ EGRESS operating mode
Obstacles open in the direction of egress with a simple push
- ▲ Highly reliable - 10 million MCBF
- ▲ IP Capable
Open communication platform
- ▲ Low power consumption
(less than 38w at rest)

SLIMLANE 940 / 940 SC

- Security Entrance Lane
with compact footprint
- Passage width: 23" (585 mm)
- Obstacle heights: 35 1/2" / 47" / 59" / 67" / 72"
(900 / 1200 / 1500 / 1700 / 1830 mm)
- Length: Std: 64 1/2" (1640 mm)
SC: 50 3/16" (1274 mm)



SLIMLANE 944 / 944 SC

- Single Door Security Entrance Lane
with a very compact footprint
- Passage width: 23" (585 mm)
- Obstacle heights: 35 1/2" / 47" / 59" / 67" / 72"
(900 / 1200 / 1500 / 1700 / 1830 mm)
- Length: Std: 64 1/2" (1640 mm)
SC: 50 3/16" (1274 mm)



SLIMLANE 950 / 950 SC

- Wide Security Entrance Lane
with compact footprint
- Passage width: 36" (915 mm)
- Obstacle heights: 35 1/2" / 47" / 59" / 67" / 72"
(900 / 1200 / 1500 / 1700 / 1830 mm)
- Length: Std: 64 1/2" (1640 mm)
SC: 50 3/16" (1274 mm)



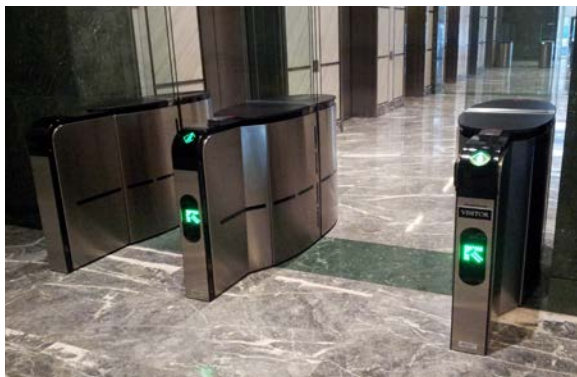
OTHER MODELS AVAILABLE





RETRACTABLE BARRIER OPTICAL TURNSTILES

SmartLane Security Entrance Lanes are ideal for applications requiring secure bidirectional passage control where safety and throughput are key.



- ▲ Sleek and elegant design
- ▲ High performance detection system
- ▲ High throughput
- ▲ Proven reliability – 10 million MCBF
- ▲ UL325 listed to ensure user safety
- ▲ IP Communication
- ▲ Customization

SMARTLANE 900

- Compact footprint
- Passage width:
23" (585 mm)
- Obstacle heights:
39" / 47" / 67"
(990 / 1200 / 1700 mm)



SMARTLANE 910

- Wide lane
- Passage width:
36" (915 mm)
- Obstacle heights:
39" / 47" / 67"
(990 / 1200 / 1700 mm)



SMARTLANE 901

- Enhanced entrance control
- Passage width:
23" (585 mm)
- Obstacle heights:
39" / 47" / 67"
(990 / 1200 / 1700 mm)



SMARTLANE 911

- Wide lane with enhanced entrance control
- Passage width:
36" (915 mm)
- Obstacle heights:
39" / 47" / 67"
(990 / 1200 / 1700 mm)



SMARTLANE 902

- Enhanced entrance & exit control
- Passage width:
23" (585 mm)
- Obstacle heights:
39" / 47" / 67"
(990 / 1200 / 1700 mm)



SMARTLANE 912

- Wide lane with enhanced entrance & exit control
- Passage width:
36" (915 mm)
- Obstacle heights:
39" / 47" / 67"
(990 / 1200 / 1700 mm)



CUSTOMIZATION AVAILABLE



AccessLane

BIDIRECTIONAL SWING GATES

The AccessLane Swing Gate facilitates the passage of people with reduced mobility (wheelchair users, service staff with trolleys, bulky equipment, etc.) as well as during the evacuation of the building during an emergency.

With its transparent, elegant design and minimal footprint, the AccessLane is designed to integrate perfectly into any architectural style while offering a high bidirectional throughput.



AL 933

- Passage width: 36" (915 mm)
- IP 44
- Glass heights: 35 1/2" / 47" (900 / 1200 mm)

AL 934

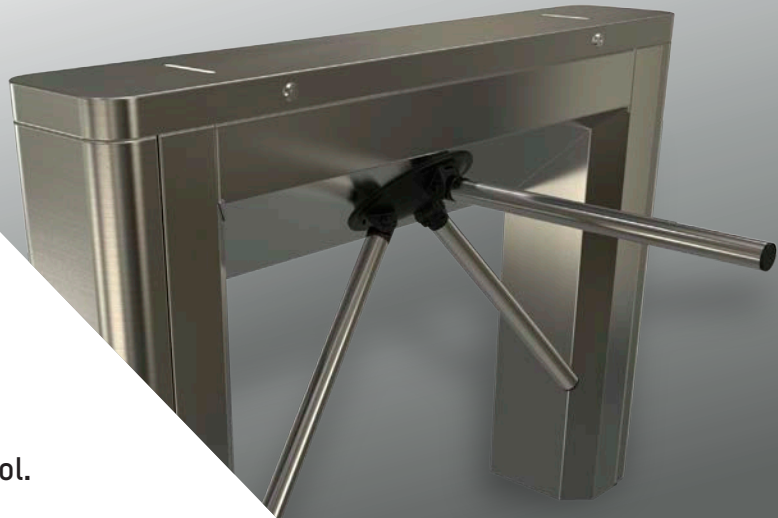
- Passage width: 36" (915 mm)
- IP 44
- Glass heights: 59" / 67" / 72" (1500 / 1700 / 1830 mm)

- ▲ Smooth and silent movement
- ▲ Compatible with most access control systems
- ▲ Circular LED pictogram for intuitive use
- ▲ IP Capable
- ▲ Configurable opening passage width
- ▲ Breakaway feature in path of EGRESS
- ▲ Low power consumption
(less than 8w at rest and 15w during operation)



TRIPOD TURNSTILES

Automatic Systems' TriLane tripod turnstiles offer dissuasive automated access control. This is a simple, economical and compact solution to control access.



TRILANE 2 FEET



TRILANE 1 FOOT

- ▲ Single passage every time
- ▲ Built to withstand intensive/abusive use
- ▲ Collapsible arm in case of emergency or power failure (option)
- ▲ IP connectivity
- ▲ IP44 suitable for outside installations
- ▲ Integration of multiple peripherals (biometric, proximity, etc.)
- ▲ Can operate in temperatures as low as -40° (with optional heaters)
- ▲ Superior mechanical systems and electronics
- ▲ Crawling and jump over detection (option)
- ▲ Highly reliable (MCBF of 5 million cycles)

▲ SMART N' SLIM

A true control center, the Smart n' Slim Monitoring Panel manages multiple Security Entrance Lanes, regardless of where the units are located.

The Smart n' Slim Monitoring panel is a flexible command center and allows for visualization, control, and consultation.

SMART N' SLIM TOWER STYLE SERVER



SMART N' SLIM 20" TOUCHSCREEN



SMART N' SLIM RACK MOUNT SERVER



▲ PUSH BUTTON CONTROL PANEL

The push button control panel is an economical tool that connects to various turnstile units (1 to 8 lanes).

- Provides limited but quick control command of the turnstiles.
- Informs guard if a violation is detected.



TRS SERIES

FULL-HEIGHT TURNSTILES

Indoor/outdoor Turnstiles mainly used to lock down the perimeter of enclosed areas. They are bidirectional turnstiles that ensure single-user throughput and are extremely weather resistant.

1 million MCBF (Mean Cycles Between Failures)



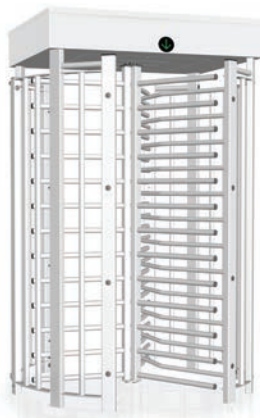
TRS 370P

- Full-Height Turnstile
- Single passage
- 3 sections
- Passage width: 26 1/4" (666 mm)



TRS 370

- Full-Height Turnstile
- Single passage
- 3 sections
- Passage width: 25 1/4" (640 mm)



TRS 372

- Full-Height Turnstile
- Dual passage
- 2 x 3 sections
- Passage width: 2 x 25 1/4" (2 x 640 mm)



Standard
Ral Color



RAL 7038
Light grey



SECURITY BOOTHS

Automatic Systems' ClearLock Security Doors are cylindrical booths that ensure strict entrance control and are especially designed for sensitive sites. Combining high security and elegance, the ClearLock series is available in different sizes, shapes and finishes, with single or double doors both on entry and exit.



CLEARLOCK 637

- Passage width: 35 1/2" (900 mm)
- External diameter:
Ø 59" (1500 mm)
H: 92 1/2" (2350 mm)



CLEARLOCK 646

- Passage width: 27 1/2" (700 mm)
- Footprint:
L: 45 1/4" (1150 mm)
W: 45 1/4" (1150 mm)
H: 92 3/4" (2360 mm)



CLEARLOCK 656

- Passage width: 35 1/2" (900 mm)
- Footprint:
L: 58 1/2" (1485 mm)
W: 74 3/4" (1900 mm)
H: 94 1/2" (2400 mm)



Standard Ral Colors



RAL 7035
Light grey



RAL 9011
Black



RAL 9010
White



RAL 8019
Dark brown

All other finishes must be specified when ordering.

- ▲ Bullet & vandalism resistant glass available (option)
- ▲ Wide range of finishes (stainless steel, painted...)
- ▲ Numerous accessories available
- ▲ Remote management using TCP/IP connectivity
- ▲ Single presence detection with weight sensor system
- ▲ Other models available



REVOLVING SECURITY DOORS

Automatic Systems' RevLock offers the most effective flow management solution for physical and electronic security of automated entrance control.



Standard Ral Colors



RAL 7035
Light grey



RAL 9011
Black



RAL 9010
White



RAL 8019
Dark brown

All other finishes must be specified when ordering.

- ▲ Single Presence detection with time of flight (T Model) or weight sensor system
- ▲ Light, modern structure featuring large glass surface
- ▲ Electronic and mechanical parts located in canopy for easy access
- ▲ Remote management using TCP/IP connectivity
- ▲ Bullet & vandalism resistant glass available (option)
- ▲ Other models available



▲ ASK US ABOUT OUR VEHICLE PORTFOLIO



Access controlled...
Future secured

1-800-263-6548

www.automatic-systems.com