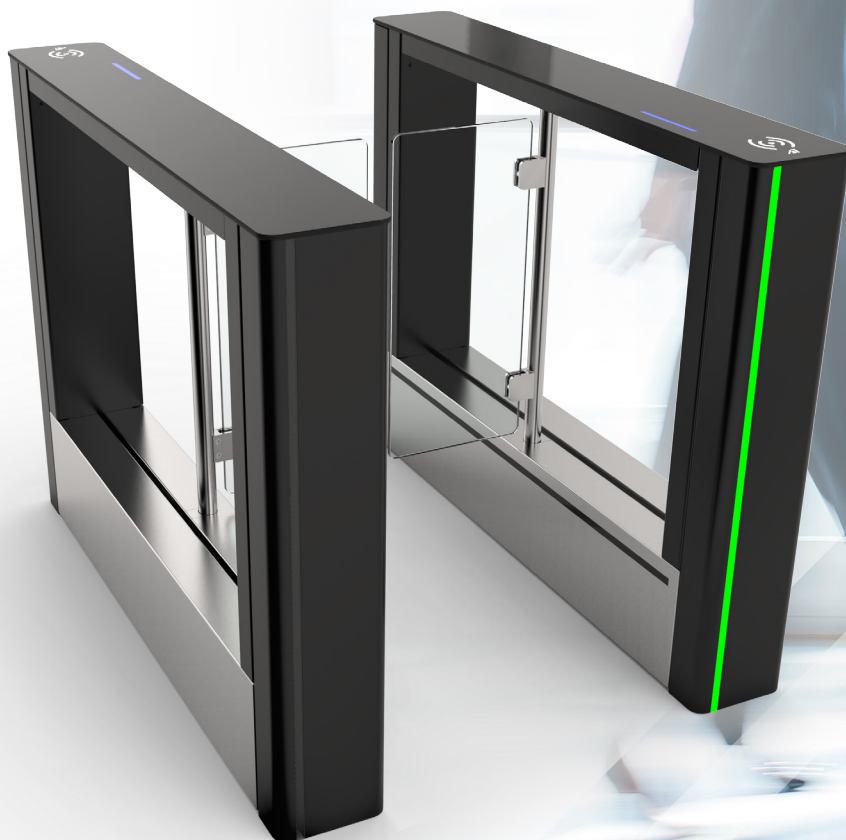


# FIRSTLANE

SPEEDGATES



**AS** **AUTOMATIC**  
SYSTEMS

Access controlled...  
Future secured



# FirstLane

The FirstLane swing speedgates' modern and elegant design guarantees high reliability. The black painted steel housing combined with the elegance of glass respects the newest architectural trends.



## RELIABILITY

- Steel Frame
- RoHS anti-corrosion zinc plating treatment
- Painted steel housing with AISI 304L stainless steel side panels
- Clear 3/8" (10 mm) thick tempered glass mobile obstacles
- Clear 5/16" (8 mm) thick tempered glass side obstacles

## AESTHETICS

- Modern and stylish look
- Aesthetic top cover in 5/16" (8 mm) thick tempered glass with black screen printing

## USER EXPERIENCE

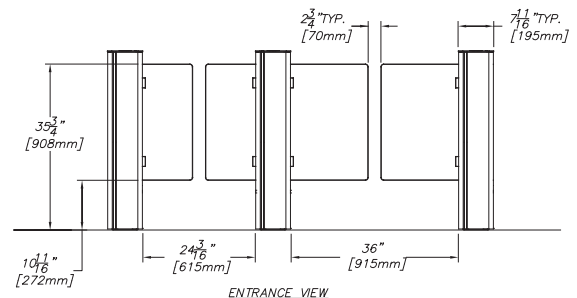
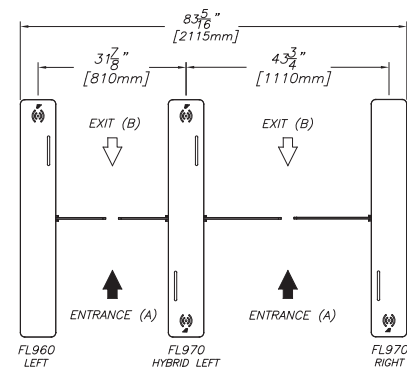
- Function pictograms for an intuitive user experience
- High throughput
- Rapid opening and closing of the obstacles
- Obstacles swing in the direction of passage (entry / exit)
- Two standard passage widths available 24 3/16" and 36" for reduced mobility users

## SAFETY

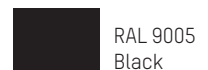
- Designed to prevent finger entrapment as well as other impacts
- Sensors monitoring the obstacles' position
- Electro-mechanical drive units that include :
  - Controller for progressive accelerations and decelerations of the obstacles
  - Geared electromagnetic brake for locking of obstacles in the event of forced entry attempts

## SECURITY

- Proprietary DIRAS detection Systems
- High-density matrix of infrared beams follows users' progression through the lane
- Dynamic and predictive algorithms ensuring fraud detection such as tailgating & piggybacking
- The cabinet allows easy integration of authentication technologies such as :
  - RFID, QRcode and barcodes readers
  - Biometric devices



STANDARD  
RAL COLOR



RAL 9005  
Black

All other finishes must be approved when ordering.