



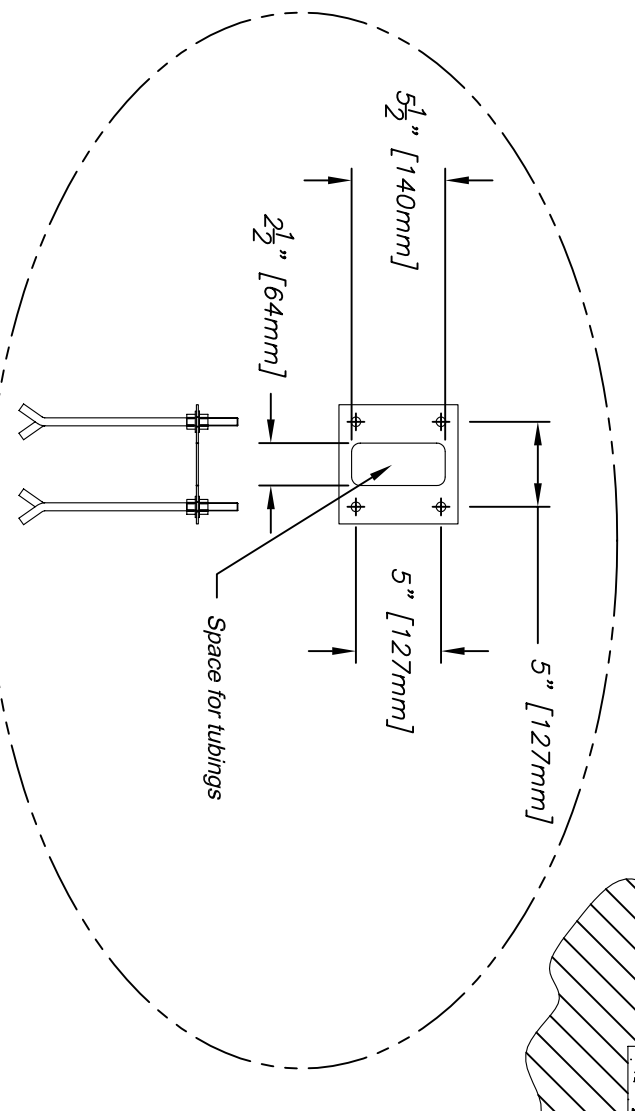
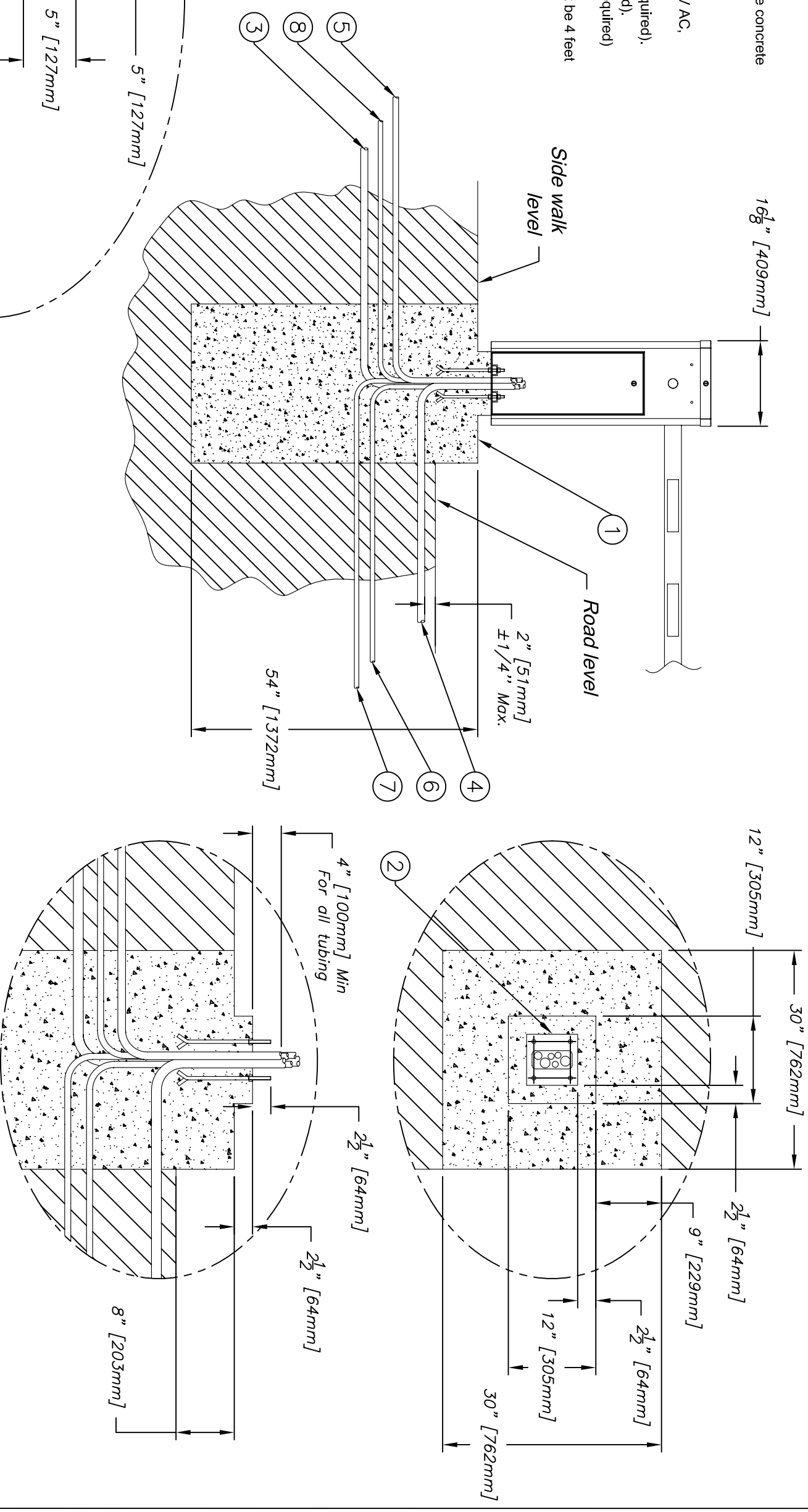
Warning

- Respect all laws and standards applicable where the barrier will be installed.
- Read the installation and user manual before installing and using using the barrier.
- The barrier must be installed by trained or certified worker.

Description

- 1: Concrete base 5000 PSI.
- 2: Installation template. Must be installed before the concrete is made.
- 3: Ø1" Tubing to the guard house.
- 4: Ø1" Tubing for detecting loop.
- 5: Ø3/4" Tubing to the power supply cabinet, 120V AC, 15 amps max circuit. (Ref. : 3 wires, 14 ga).
- 6: Ø1/2" Tubing Electromagnetic tip support (if required).
- 7: Ø1/2" Tubing for the exit control post (if required).
- 8: Ø1/2" Tubing for the entrance control post (if required)

Before the installation of the barrier, the wire must be 4 feet long from the top of the concrete base.



Installation template details

MATERIAU/MATERIAL	FICHER	FILENAME	BL229-IN-01-EN
FABRICATION	TREITEMENT/TREATMENT	ESBARGER LES ARÊTES VIVES BRKAK ALL SHARP EDGES	
Nb./App.	POIDS/WEIGHT	SURFACE	FINI/FINISH
<p>LES INFORMATIONS CONTENUES SUR LES DESSINS DE ASA Inc. SONT CONFIDENTIELLES ET SONT LA PROPRIÉTÉ DE ASA Inc. TOUTES REPRODUCTIONS, DIMENSIONS OU ILLUSTRATIONS SONT INTERDITES SANS LA PERMISSION ÉCRITE DE ASA Inc. INFORMATION DISCLOSED HERE IS CONFIDENTIAL AND IS THE PROPERTY OF ASA Inc. ANY REPRODUCTION, DISTRIBUTION OR USE IS PROHIBITED WITHOUT A WRITTEN CONSENT BY ASA Inc.</p>			
IMPERIAL	METRIC		
X/X ±1/32"	X X ±1mm		
X.XX ±0.030"	X.X X ±0.5mm		
X.XXX ±0.015"	X.XX ±0.05mm		
X.XXX ±0.005"	X.XX ±0.005mm		
ANGLES	SAUF SI INDICUÉS UNLESS OTHERWISE NOTED	± 1/2 °	
DIMENSIONS		FORMAT	REV.
B			DATE
TITRE		MODIFICATIONS/CHANGES	
BL229 INSTALLATION BASE		automatic systems america inc.	
DESSINE PAR		ECHELLE/SCALE	DATE
AG		N/A	23/11/2006
VERIFIÉ PAR		FEUILLE/SHEET	DE/OF
CHECKED BY		1	1
No. DESSIN/DWG. No.		REV.	
BL229-IN-01-EN		A	